



The Hong Kong STI/AIDS update is a composite report on HIV/AIDS reporting and STI caseload statistics published quarterly. The current issue has the updated information up to March 2024.

SPP Surveillance Team:

Dr. Annie LO

Ms. Shirry WAN

Correspondence to:

Special Preventive Programme,

Centre for Health Protection, Department of Health

c/o Red Ribbon Centre, 2/F Wang Tau Hom Jockey Club Clinic,

200 Junction Road East, Kowloon, Hong Kong

Telephone: (852) 3143 7200 Facsimile: (852) 2338 0534

E-mail: aids@dh.gov.hk

List of Tables / Figures

1. NUMBER OF HIV/AIDS REPORTED	4
TABLE 1.1 SUMMARY TABLE ON THE REPORTED NUMBER OF HIV/AIDS	4
CHART 1.1 NUMBER OF HIV/AIDS REPORTED	6
2. GENDER DISTRIBUTION OF REPORTED HIV/AIDS	8
TABLE 2.1 GENDER DISTRIBUTION OF REPORTED HIV	8
CHART 2.1 GENDER DISTRIBUTION OF REPORTED HIV BY QUARTER	9
CHART 2.2 GENDER DISTRIBUTION OF REPORTED HIV BY YEAR	10
TABLE 2.2 GENDER DISTRIBUTION OF REPORTED AIDS	11
CHART 2.3 GENDER DISTRIBUTION OF REPORTED AIDS BY QUARTER	12
CHART 2.4 GENDER DISTRIBUTION OF REPORTED AIDS BY YEAR	13
3. ETHNICITY OF REPORTED HIV/AIDS	14
TABLE 3.1 DISTRIBUTION OF ETHNICITY OF REPORTED HIV	14
CHART 3.1 DISTRIBUTION OF ETHNICITY OF REPORTED HIV	15
TABLE 3.2 DISTRIBUTION OF ETHNICITY OF REPORTED AIDS	16
CHART 3.2 DISTRIBUTION OF ETHNICITY OF REPORTED AIDS	17
4. AGE DISTRIBUTION OF REPORTED HIV/AIDS	18
TABLE 4.1 AGE DISTRIBUTION OF REPORTED HIV	18
CHART 4.1 AGE DISTRIBUTION OF REPORTED HIV	19
CHART 4.2 AGE GROUP & GENDER OF TOTAL REPORTED HIV	20
TABLE 4.2 AGE DISTRIBUTION OF REPORTED AIDS	21
CHART 4.3 AGE DISTRIBUTION OF REPORTED AIDS	22
CHART 4.4 AGE GROUP & GENDER OF TOTAL REPORTED AIDS	23
5. EXPOSURE CATEGORIES OF REPORTED HIV/AIDS	24
TABLE 5.1 EXPOSURE CATEGORIES OF REPORTED HIV	24
CHART 5.1 EXPOSURE CATEGORIES OF REPORTED HIV	25
TABLE 5.2 EXPOSURE CATEGORIES OF REPORTED AIDS	26
CHART 5.2 EXPOSURE CATEGORIES OF REPORTED AIDS	27

6. RATIO (HETEROSEXUAL : HOMOSEXUAL / BISEXUAL) OF SEXUALLY ACQUIRED HIV INFECTION IN MEN	28
TABLE 6.1 RATIO OF SEXUALLY ACQUIRED INFECTION IN MEN WITH REPORTED HIV/AIDS (HETEROSEXUAL : HOMO / BISEXUAL) BY QUARTER	28
TABLE 6.2 RATIO OF SEXUALLY ACQUIRED INFECTION IN MEN WITH REPORTED HIV/AIDS (HETEROSEXUAL : HOMO / BISEXUAL) BY YEAR	29
7. INJECTING DRUG USERS IN REPORTED HIV/AIDS	30
TABLE 7.1 INJECTING DRUG USERS IN REPORTED HIV/AIDS	30
TABLE 7.2 NUMBER OF INJECTING DRUG USER IN REPORTED HIV/AIDS BY YEAR	31
8. SOURCE OF REFERRAL OF REPORTED HIV/AIDS	32
TABLE 8.1 SOURCE OF REFERRAL OF REPORTED HIV	32
CHART 8.1 SOURCE OF REFERRAL OF REPORTED HIV	33
TABLE 8.2 SOURCE OF REFERRAL OF REPORTED AIDS	34
CHART 8.2 SOURCE OF REFERRAL OF REPORTED AIDS	35
9. DISTRIBUTION OF AIDS DEFINING ILLNESSES	36
TABLE 9.1 DISTRIBUTION OF AIDS DEFINING ILLNESS OF REPORTED AIDS	36
CHART 9.1 AIDS DEFINING ILLNESS OF TOTAL REPORTED AIDS	37
CHART 9.2 AIDS DEFINING ILLNESS OF REPORTED AIDS BY YEAR	38
10. REPORTED SEXUALLY TRANSMITTED INFECTIONS (STIS) DIAGNOSED IN SOCIAL HYGIENE SERVICE	39
TABLE 10.1 SUMMARY TABLE ON THE REPORTED STIS DIAGNOSED IN SOCIAL HYGIENE SERVICE	39
11. GENDER DISTRIBUTION OF REPORTED STIS	41
TABLE 11.1 GENDER DISTRIBUTION OF SELECTED STI REPORTED BY SOCIAL HYGIENE SERVICE	41
TABLE 11.2 GENDER DISTRIBUTION OF REPORTED STI BY CLINIC	43
12. CLINIC DISTRIBUTION	44
CHART 12.1 NUMBER OF NEWLY REPORT STI IN Q1 2024 BY CLINIC (MALE CLIENTS)	44
CHART 12.2 NUMBER OF NEWLY REPORT STI IN Q1 2024 BY CLINIC (FEMALE CLIENTS)	45

1. Number of HIV/AIDS reported

Table 1.1 Summary table on the reported number of HIV/AIDS

	This quarter (Jan - Mar 2024)		Last quarter (Oct - Dec 2023)		Same quarter last year (Jan - Mar 2023)		Cumulative (1984 – Mar 2024)	
	HIV	AIDS	HIV	AIDS	HIV	AIDS	HIV	AIDS
Sex								
Male	83	17	75	11	87	32	9,950	2,073
Female	22	7	20	3	9	3	2,193	434
Ethnicity / race								
Chinese	70	17	65	8	73	29	8,461	1,932
Non-Chinese	20	7	15	6	12	6	3,238	575
<i>Asian</i>	<i>12</i>	<i>6</i>	<i>11</i>	<i>3</i>	<i>7</i>	<i>4</i>	<i>1,689</i>	<i>409</i>
<i>White</i>	<i>4</i>	<i>0</i>	<i>3</i>	<i>3</i>	<i>2</i>	<i>2</i>	<i>673</i>	<i>110</i>
<i>Black</i>	<i>3</i>	<i>1</i>	<i>0</i>	<i>0</i>	<i>2</i>	<i>0</i>	<i>286</i>	<i>47</i>
<i>Others</i>	<i>1</i>	<i>0</i>	<i>1</i>	<i>0</i>	<i>1</i>	<i>0</i>	<i>590</i>	<i>9</i>
Unknown	15	0	15	0	11	0	444	0

(to be cont'd)

Table 1.1 (cont'd)

	This quarter (Jan - Mar 2024)		Last quarter (Oct - Dec 2023)		Same quarter last year (Jan - Mar 2023)		Cumulative (1984 – Mar 2024)	
	HIV	AIDS	HIV	AIDS	HIV	AIDS	HIV	AIDS
Age at diagnosis								
Adult	105	24	95	14	96	35	12,087	2,493
Child (age 13 or less)	0	0	0	0	0	0	56	14
Exposure category								
Heterosexual	24	11	21	6	22	15	3,884	1,257
Homosexual	54	9	49	7	55	17	5,098	803
Bisexual	7	2	4	1	5	2	725	176
Injecting drug use	0	0	2	0	2	1	383	70
Blood / blood product infusion	0	0	0	0	1	0	87	26
Mother-to-child transmission	0	0	0	0	0	0	36	11
Undetermined	20	2	19	0	11	0	1,930	164

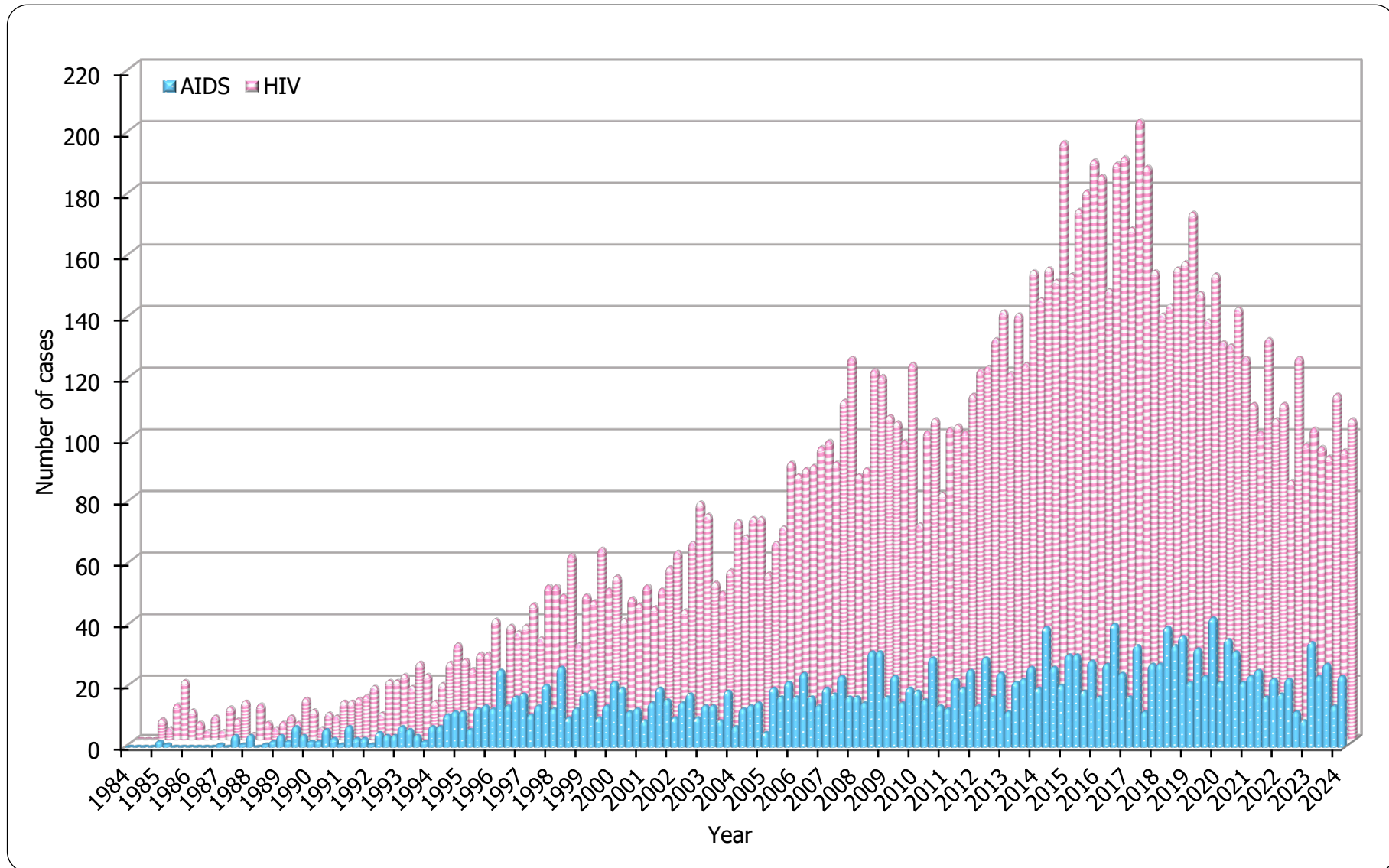
(to be cont'd)

Table 1.1 (cont'd)

	This quarter (Jan - Mar 2024)		Last quarter (Oct - Dec 2023)		Same quarter last year (Jan - Mar 2023)		Cumulative (1984 – Mar 2024)	
	HIV	AIDS	HIV	AIDS	HIV	AIDS	HIV	AIDS
Source of referral								
Public hospitals / clinics / laboratories	51	20	42	9	49	30	5,071	1,946
Private hospitals / clinics / laboratories	8	2	14	2	14	2	2,273	310
Social Hygiene Clinics	13	1	11	2	9	2	1,756	88
DH AIDS Unit	13*	1	8	1	12	1	1,522	124
AIDS service organisations (NGOs)	18	0	18	0	11	0	1,196	21
Hong Kong Red Cross Blood Transfusion Service	1	0	2	0	1	0	187	11
Drug rehabilitation services	1	0	0	0	0	0	138	7
Total	105	24	95	14	96	35	12,143	2,507

* Among the 13 cases reported by DH AIDS Unit, 2 were referred by AIDS service organisations for confirmatory testing.

Chart 1.1 Number of HIV/AIDS reported



2. Gender distribution of reported HIV/AIDS

Table 2.1 Gender distribution of reported HIV

	This quarter (Jan - Mar 2024)	Last quarter (Oct - Dec 2023)	Same quarter last year (Jan - Mar 2023)	Cumulative (1984 – Mar 2024)
Male	83	75	87	9,950
Female	22	20	9	2,193
Total	105	95	96	12,143

Chart 2.1 Gender distribution of reported HIV by quarter

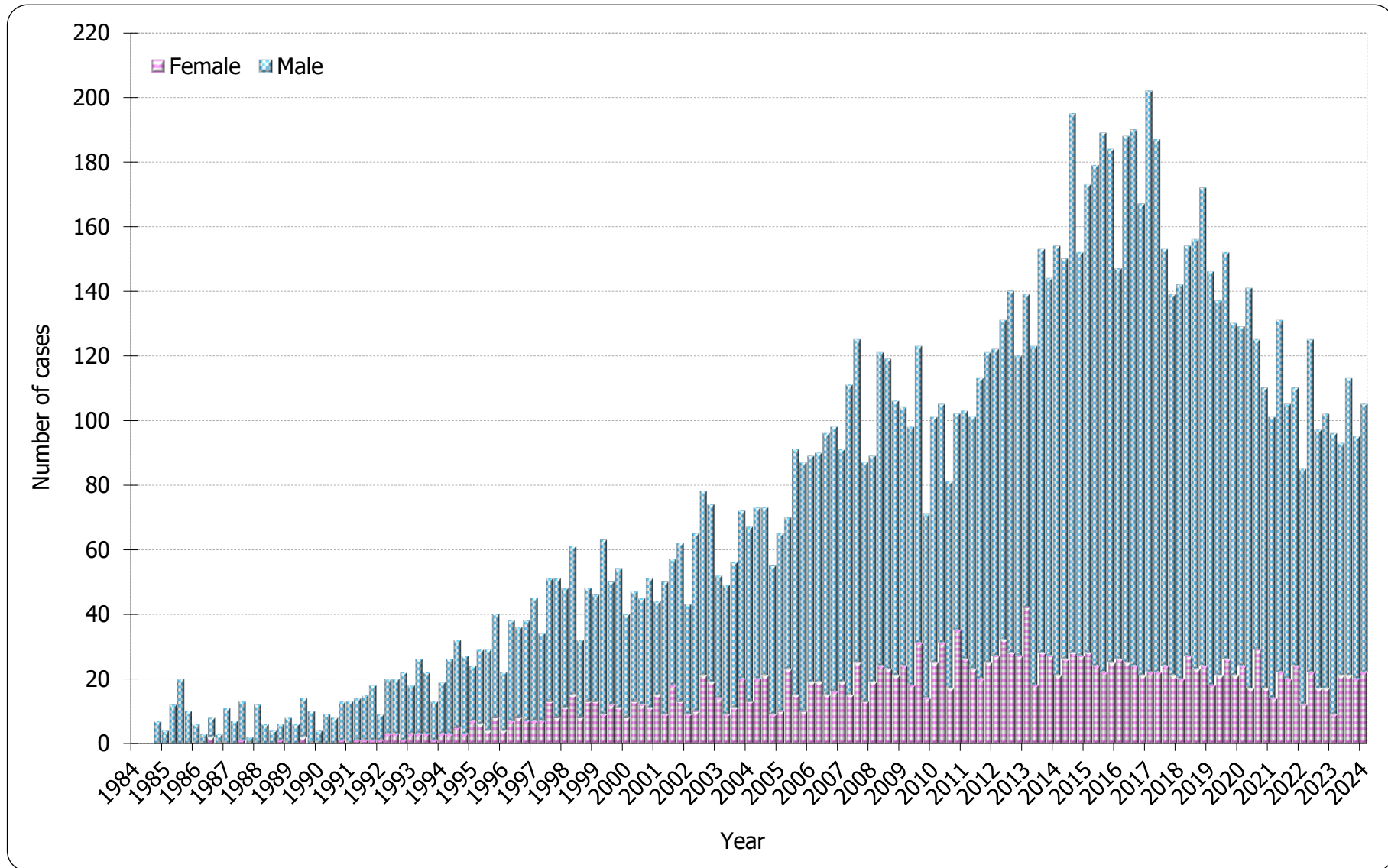


Chart 2.2 Gender distribution of reported HIV by year

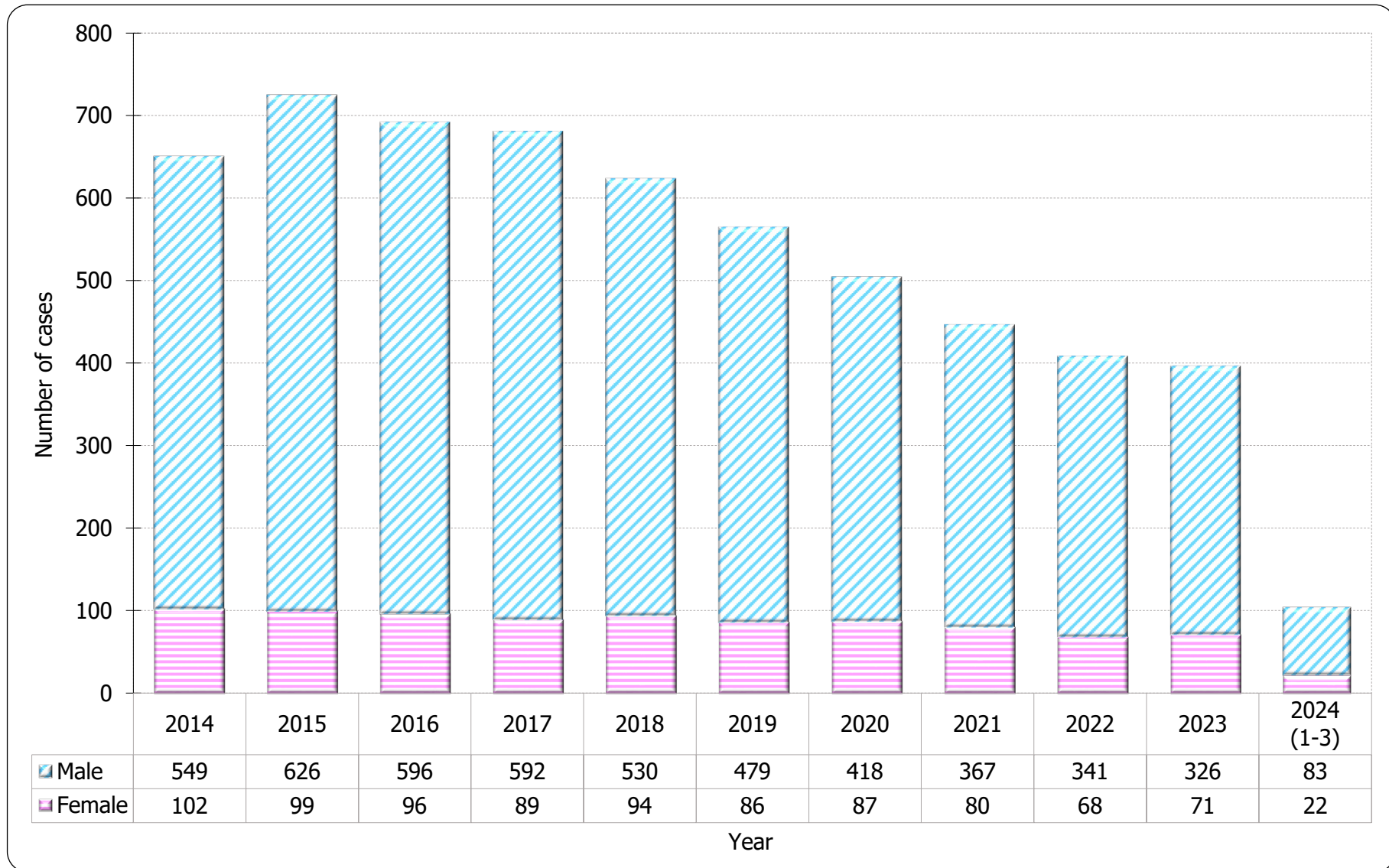


Table 2.2 Gender distribution of reported AIDS

	This quarter (Jan - Mar 2024)	Last quarter (Oct - Dec 2023)	Same quarter last year (Jan - Mar 2023)	Cumulative (1984 – Mar 2024)
Male	17	11	32	2,073
Female	7	3	3	434
Total	24	14	35	2,507

Chart 2.3 Gender distribution of reported AIDS by quarter

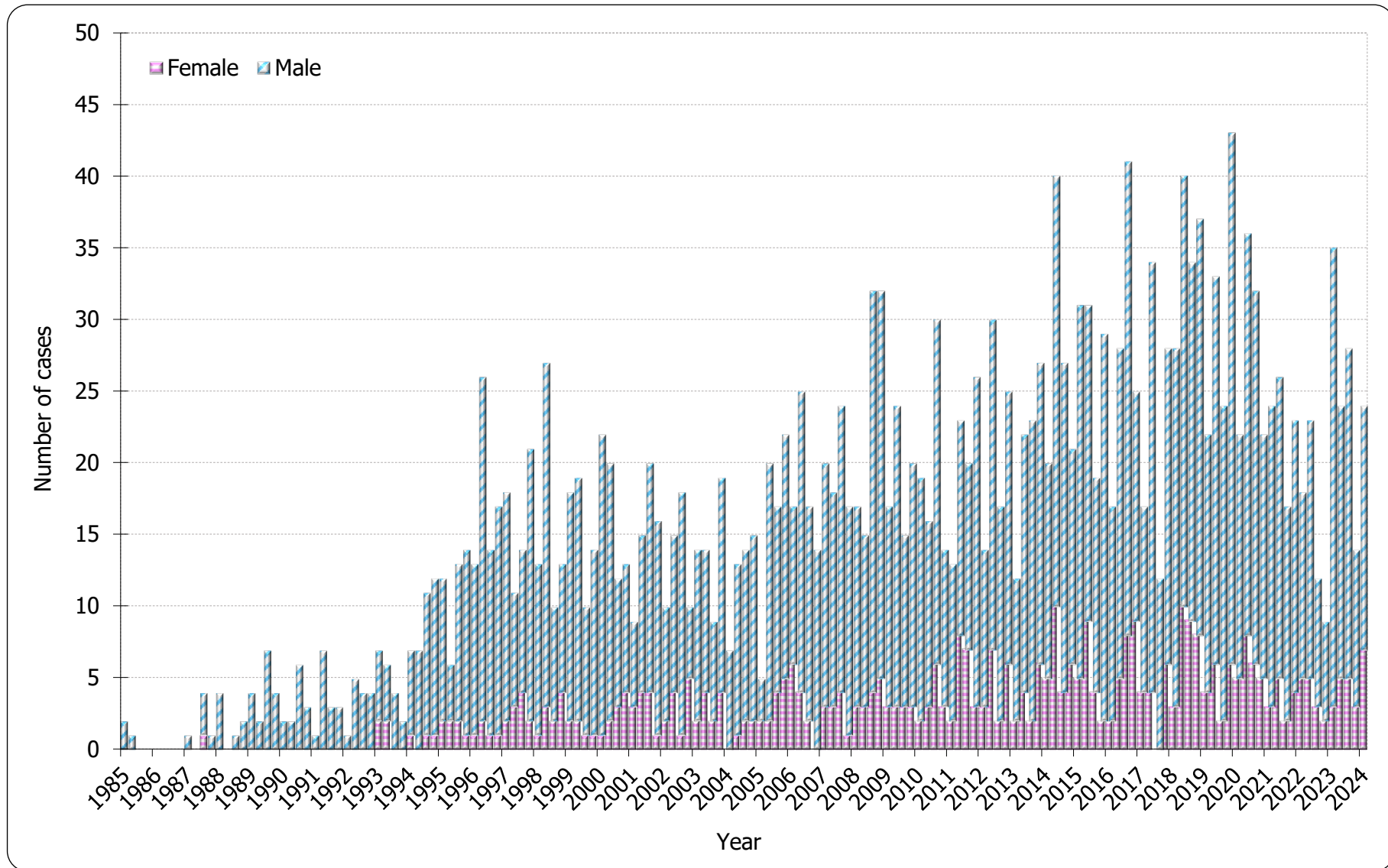
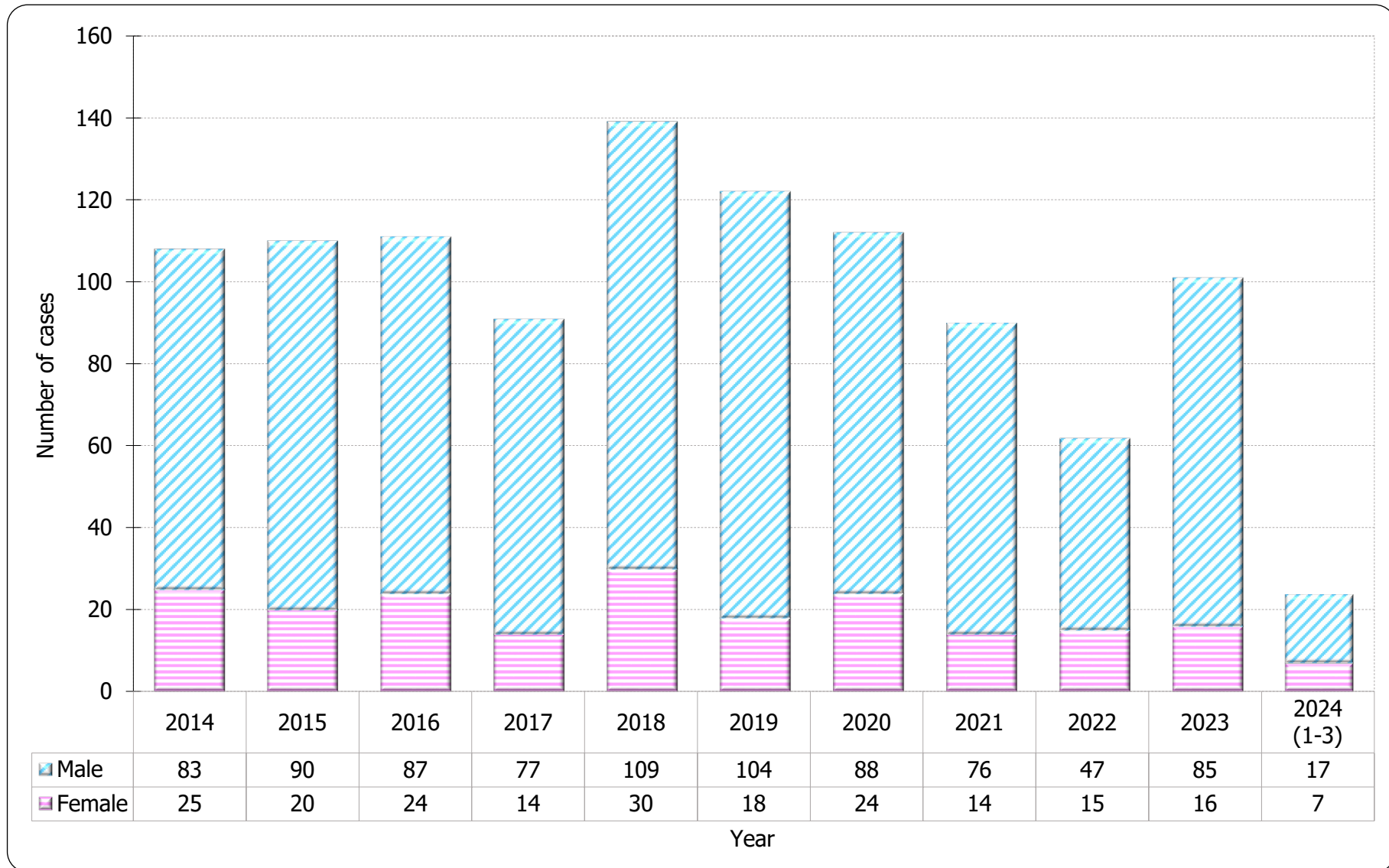


Chart 2.4 Gender distribution of reported AIDS by year



3. Ethnicity of reported HIV/AIDS

Table 3.1 Distribution of ethnicity of reported HIV

	This quarter (Jan - Mar 2024)	Last quarter (Oct - Dec 2023)	Same quarter last year (Jan - Mar 2023)	Cumulative (1984 – Mar 2024)
Chinese	70	65	73	8,461
Non-Chinese	20	15	12	3,238
<i>Asian</i>	<i>12</i>	<i>11</i>	<i>7</i>	<i>1,689</i>
<i>White</i>	<i>4</i>	<i>3</i>	<i>2</i>	<i>673</i>
<i>Black</i>	<i>3</i>	<i>0</i>	<i>2</i>	<i>286</i>
<i>Others</i>	<i>1</i>	<i>1</i>	<i>1</i>	<i>590</i>
Unknown	15	15	11	444
Total	105	95	96	12,143

Chart 3.1 Distribution of ethnicity of reported HIV

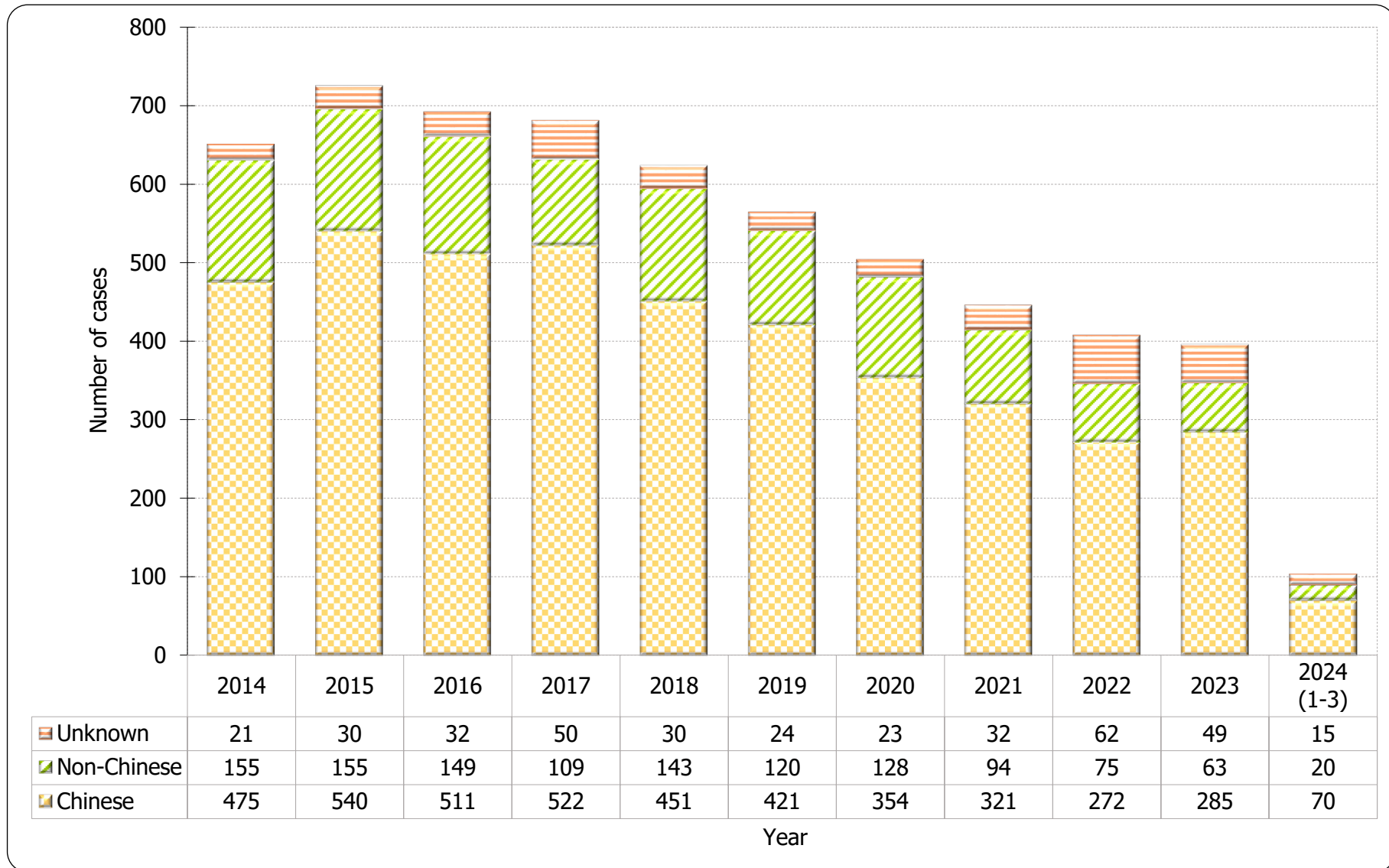
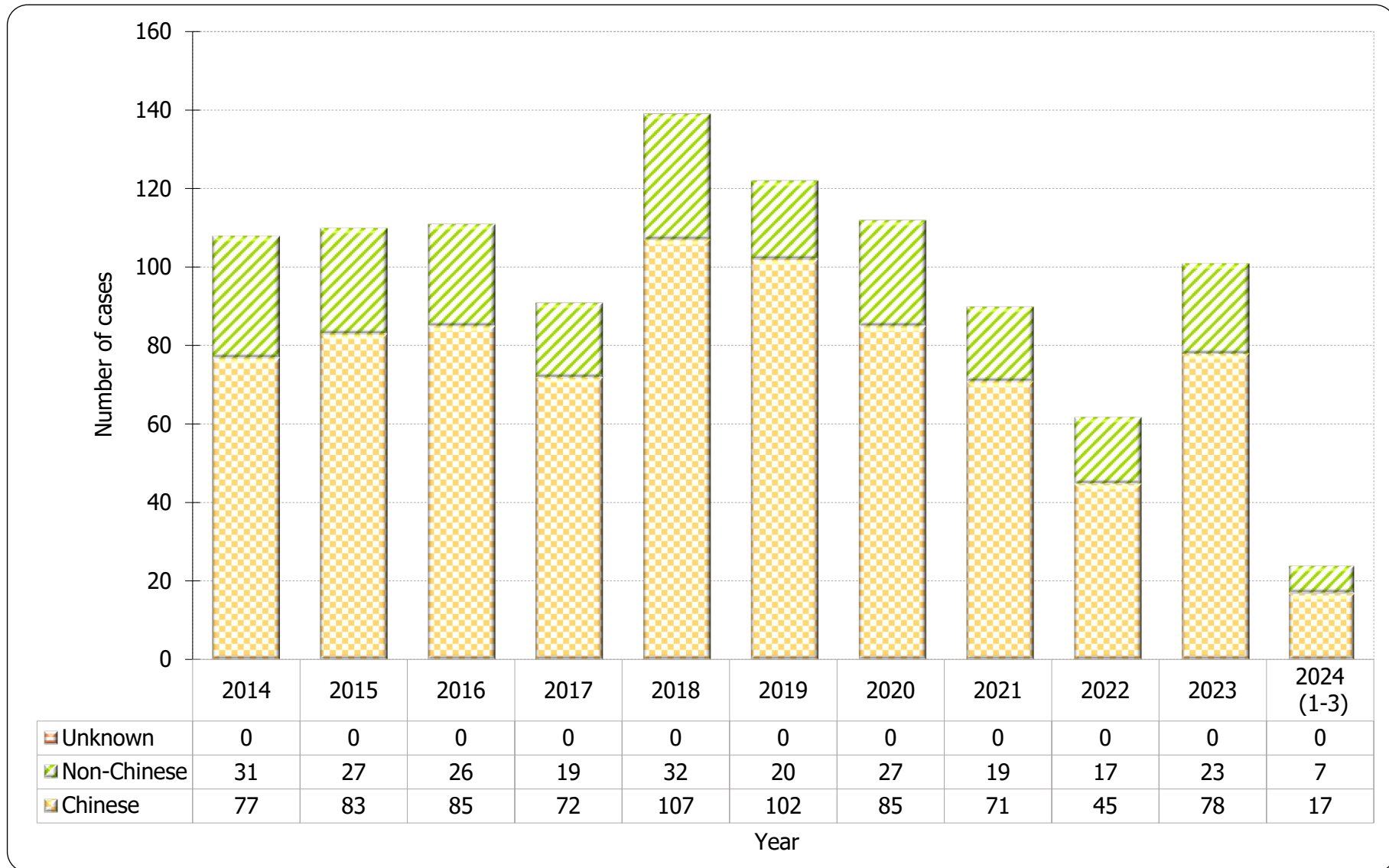


Table 3.2 Distribution of ethnicity of reported AIDS

	This quarter (Jan - Mar 2024)	Last quarter (Oct - Dec 2023)	Same quarter last year (Jan - Mar 2023)	Cumulative (1984 – Mar 2024)
Chinese	17	8	29	1,932
Non-Chinese	7	6	6	575
<i>Asian</i>	<i>6</i>	<i>3</i>	<i>4</i>	<i>409</i>
<i>White</i>	<i>0</i>	<i>3</i>	<i>2</i>	<i>110</i>
<i>Black</i>	<i>1</i>	<i>0</i>	<i>0</i>	<i>47</i>
<i>Others</i>	<i>0</i>	<i>0</i>	<i>0</i>	<i>9</i>
Unknown	0	0	0	0
Total	24	14	35	2,507

Chart 3.2 Distribution of ethnicity of reported AIDS



4. Age distribution of reported HIV/AIDS

Table 4.1 Age distribution of reported HIV

	This quarter (Jan - Mar 2024)	Last quarter (Oct - Dec 2023)	Same quarter last year (Jan - Mar 2023)	Cumulative (1984 – Mar 2024)
Adult	105	95	96	12,087
Child (age 13 or less)	0	0	0	56
Total	105	95	96	12,143

Chart 4.1 Age distribution of reported HIV

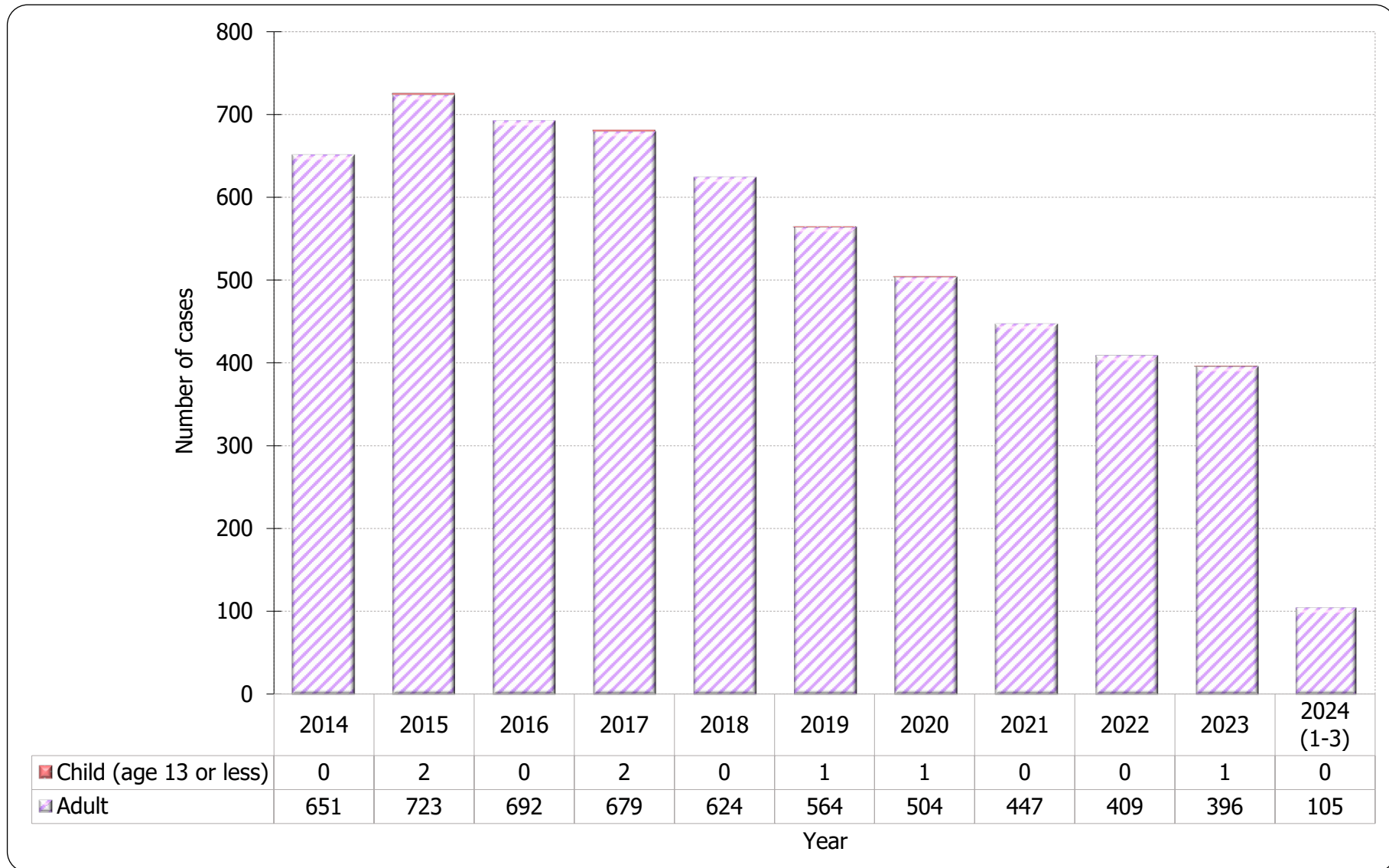


Chart 4.2 Age group & gender of total reported HIV

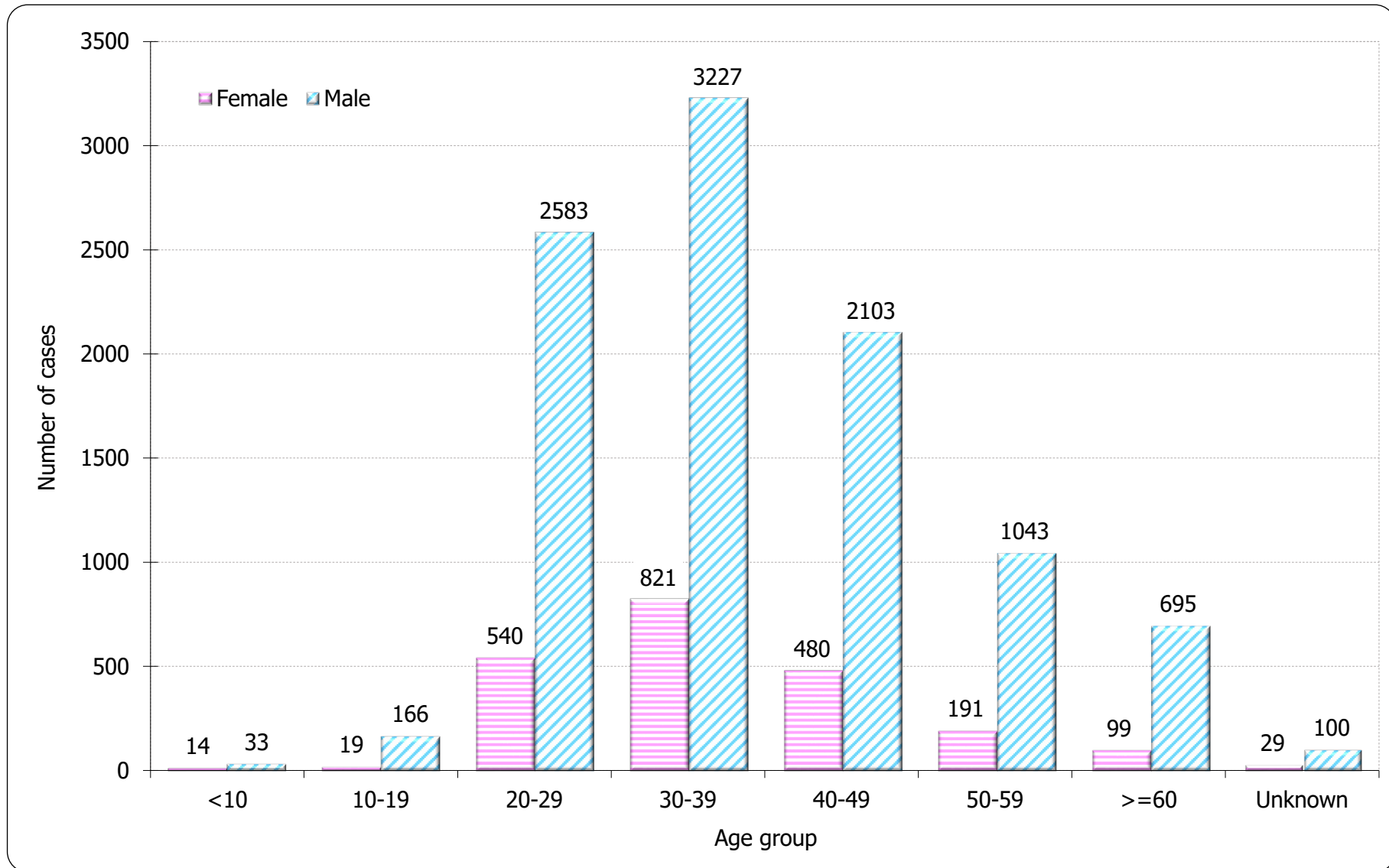


Table 4.2 Age distribution of reported AIDS

	This quarter (Jan - Mar 2024)	Last quarter (Oct - Dec 2023)	Same quarter last year (Jan - Mar 2023)	Cumulative (1984 – Mar 2024)
Adult	24	14	35	2,493
Child (age 13 or less)	0	0	0	14
Total	24	14	35	2,507

Chart 4.3 Age distribution of reported AIDS

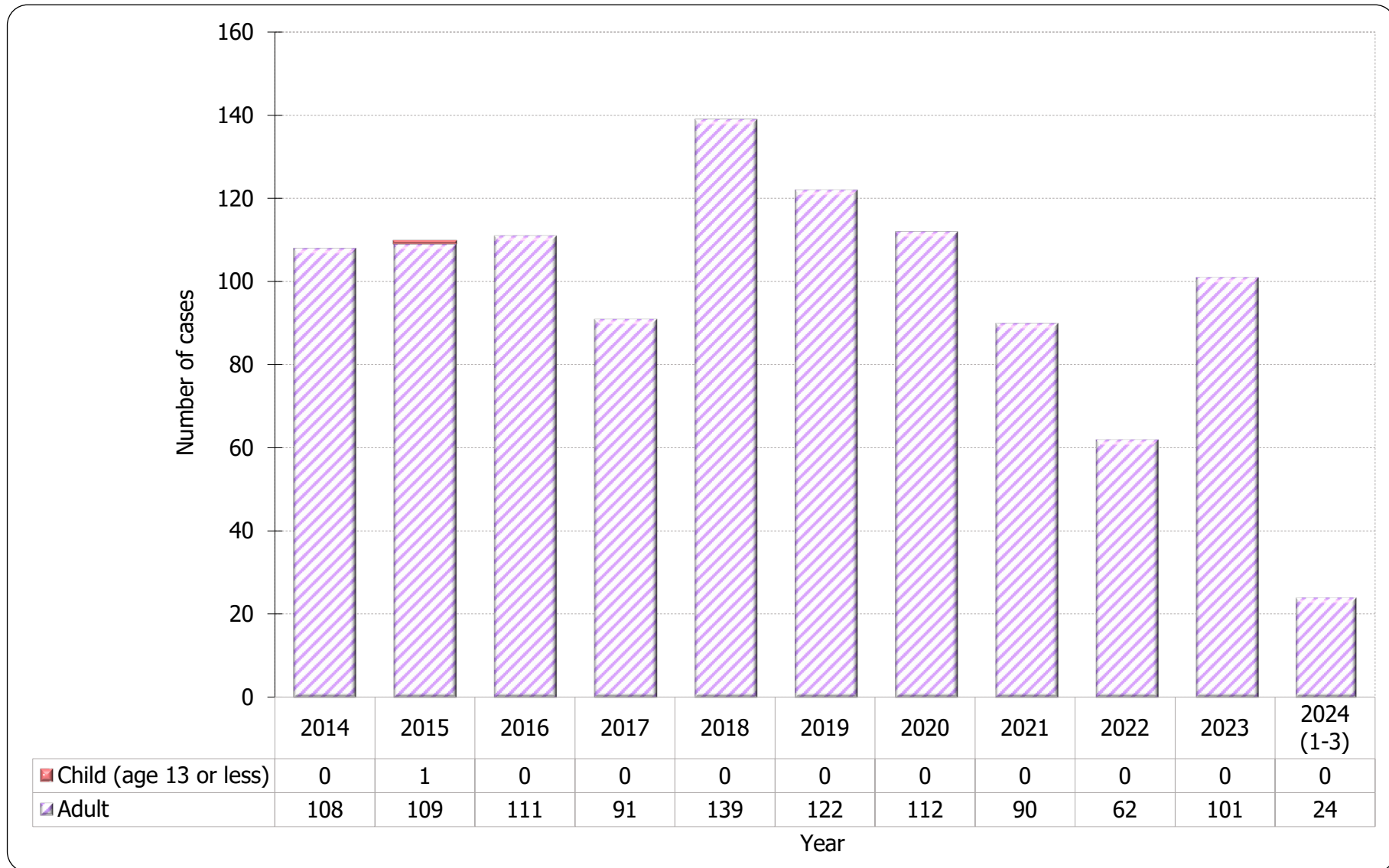
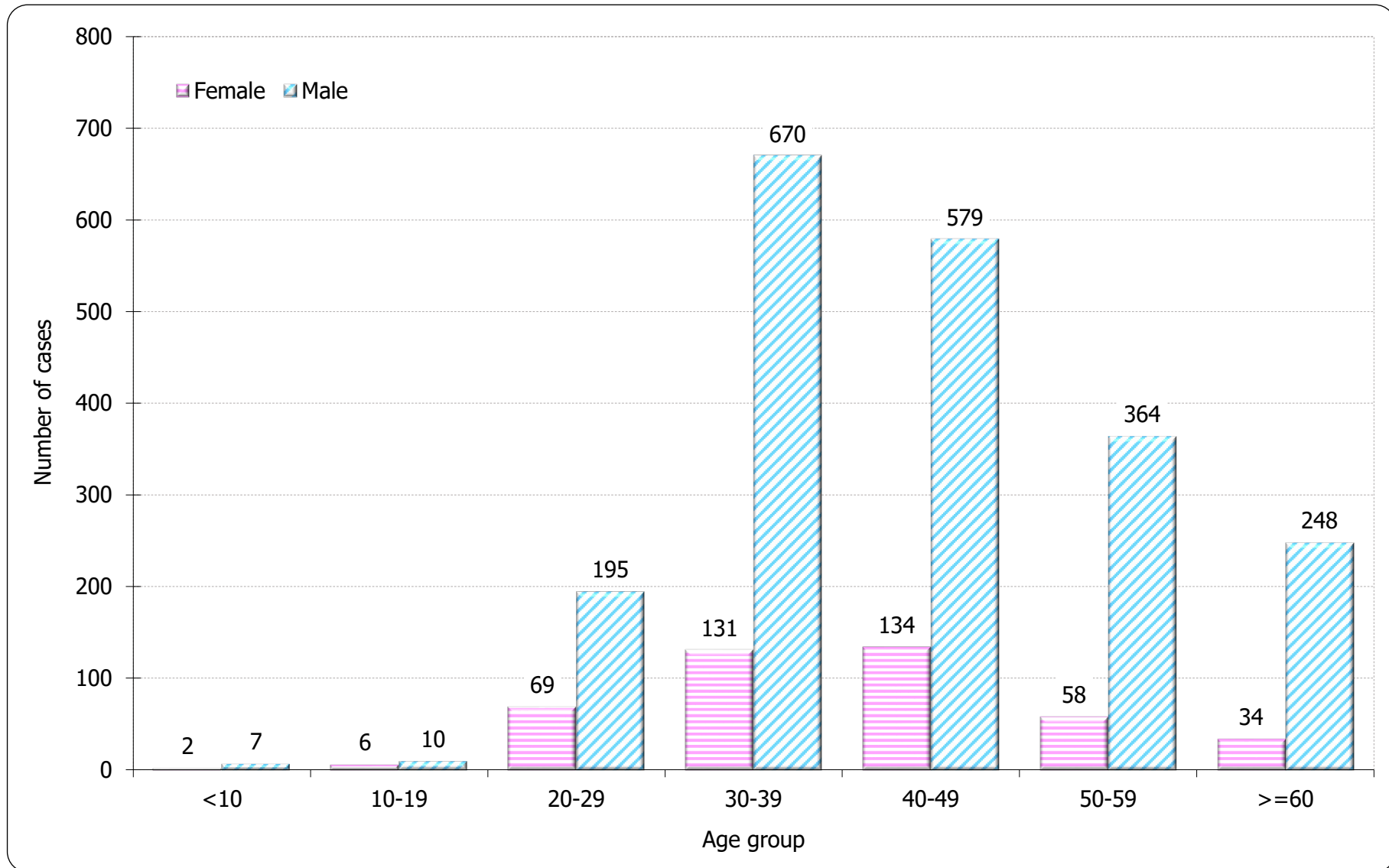


Chart 4.4 Age group & gender of total reported AIDS

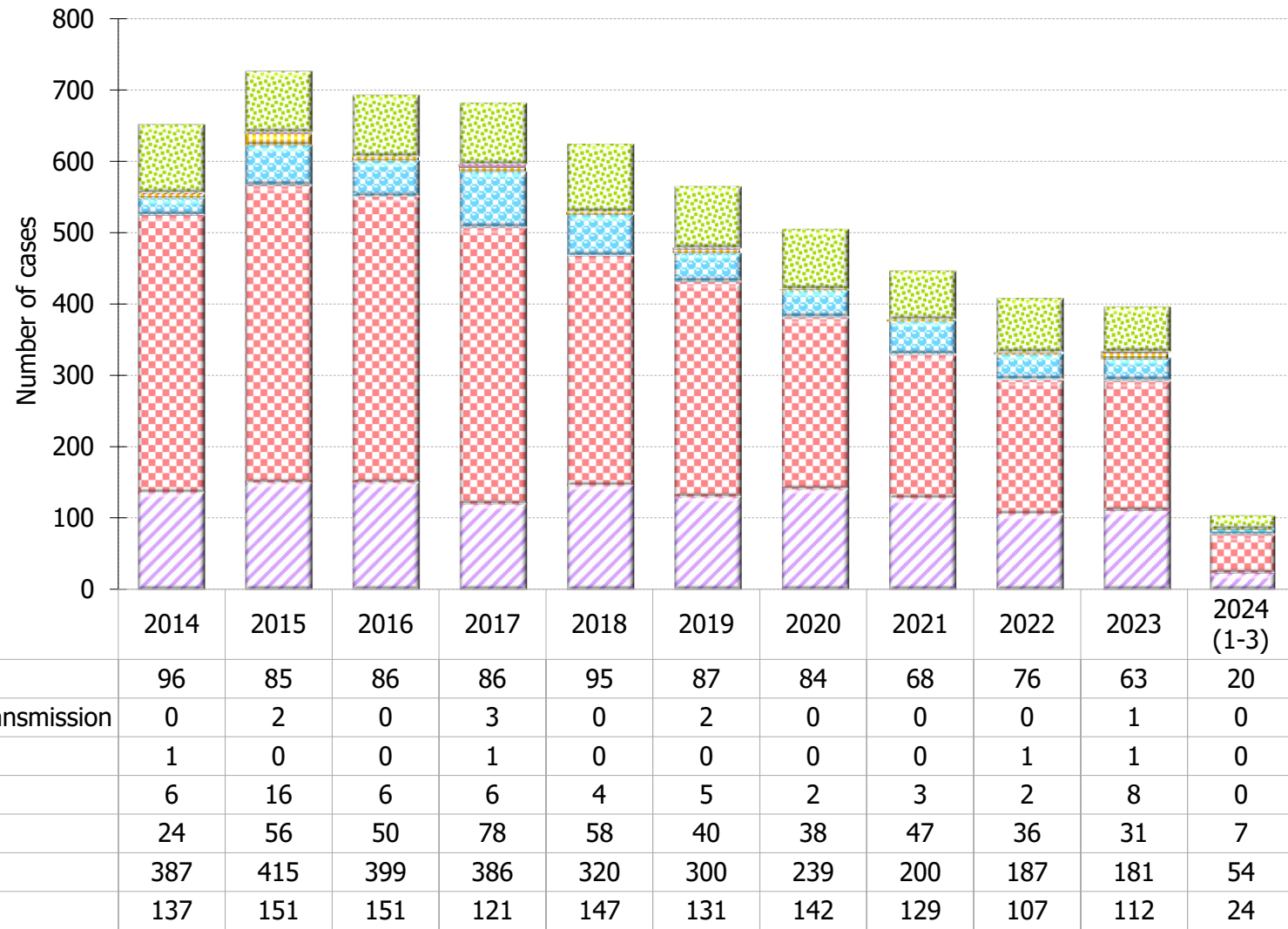


5. Exposure categories of reported HIV/AIDS

Table 5.1 Exposure categories of reported HIV

	This quarter (Jan - Mar 2024)	Last quarter (Oct - Dec 2023)	Same quarter last year (Jan - Mar 2023)	Cumulative (1984 – Mar 2024)
Heterosexual	24	21	22	3,884
Homosexual	54	49	55	5,098
Bisexual	7	4	5	725
Injecting drug use	0	2	2	383
Blood / blood product infusion	0	0	1	87
Mother-to-child transmission	0	0	0	36
Undetermined	20	19	11	1,930
Total	105	95	96	12,143

Chart 5.1 Exposure categories of reported HIV

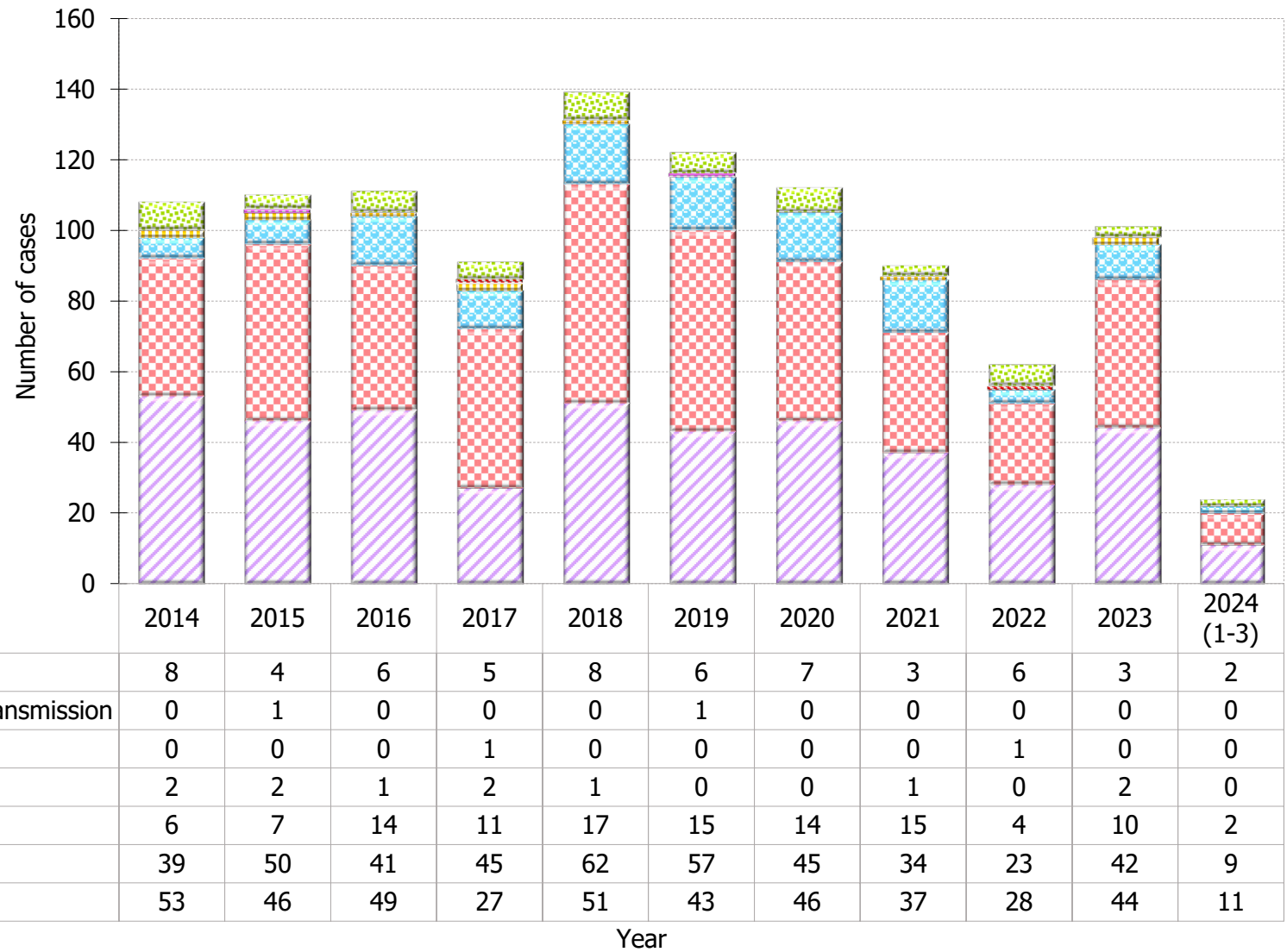


Year

Table 5.2 Exposure categories of reported AIDS

	This quarter (Jan - Mar 2024)	Last quarter (Oct - Dec 2023)	Same quarter last year (Jan - Mar 2023)	Cumulative (1984 – Mar 2024)
Heterosexual	11	6	15	1,257
Homosexual	9	7	17	803
Bisexual	2	1	2	176
Injecting drug use	0	0	1	70
Blood / blood product infusion	0	0	0	26
Mother-to-child transmission	0	0	0	11
Undetermined	2	0	0	164
Total	24	14	35	2,507

Chart 5.2 Exposure categories of reported AIDS



6. Ratio (heterosexual : homosexual / bisexual) of sexually acquired HIV infection in men

Table 6.1 Ratio of sexually acquired infection in men with reported HIV/AIDS (heterosexual : homo / bisexual) by quarter

	This quarter (Jan - Mar 2024)	Last quarter (Oct - Dec 2023)	Same quarter last year (Jan - Mar 2023)	Cumulative (1984 – Mar 2024)
HIV	0.1 : 1	0.2 : 1	0.3 : 1	0.4 : 1
AIDS	0.5 : 1	0.4 : 1	0.6 : 1	0.9 : 1

Table 6.2 Ratio of sexually acquired infection in men with reported HIV/AIDS (heterosexual : homo / bisexual) by year

	2014	2015	2016	2017	2018	2019	2020	2021	2022	2023	2024 (1-3)	1984 – Mar 2024
HIV	0.2 : 1	0.2 : 1	0.2 : 1	0.1 : 1	0.2 : 1	0.2 : 1	0.3 : 1	0.3 : 1	0.3 : 1	0.3 : 1	0.1 : 1	0.4 : 1
AIDS	0.7 : 1	0.5 : 1	0.5 : 1	0.3 : 1	0.3 : 1	0.4 : 1	0.4 : 1	0.5 : 1	0.6 : 1	0.6 : 1	0.5 : 1	0.9 : 1

7. Injecting drug users in reported HIV/AIDS

Table 7.1 Injecting drug users in reported HIV/AIDS

	This quarter (Jan - Mar 2024)	Last quarter (Oct - Dec 2023)	Same quarter last year (Jan - Mar 2023)	Cumulative (1984 - Mar 2024)
HIV (% of reported HIV)	0 0.0%	2 2.1%	2 2.1%	383 3.2%
AIDS (% of reported AIDS)	0 0.0%	0 0.0%	1 2.9%	70 2.8%

Table 7.2 Number of injecting drug user in reported HIV/AIDS by year

	2014	2015	2016	2017	2018	2019	2020	2021	2022	2023	2024 (1-3)	1984 – Mar 2024
HIV (% of reported HIV)	6 (0.9%)	16 (2.2%)	6 (0.9%)	6 (0.9%)	4 (0.6%)	5 (0.9%)	2 (0.4%)	3 (0.7%)	2 (0.5%)	8 (2.0%)	0 (0.0%)	383 (3.2%)
AIDS (% of reported AIDS)	2 (1.9%)	2 (1.8%)	1 (0.9%)	2 (2.2%)	1 (0.7%)	0 (0.0%)	0 (0.0%)	1 (1.1%)	0 (0.0%)	2 (2.0%)	0 (0.0%)	70 (2.8%)

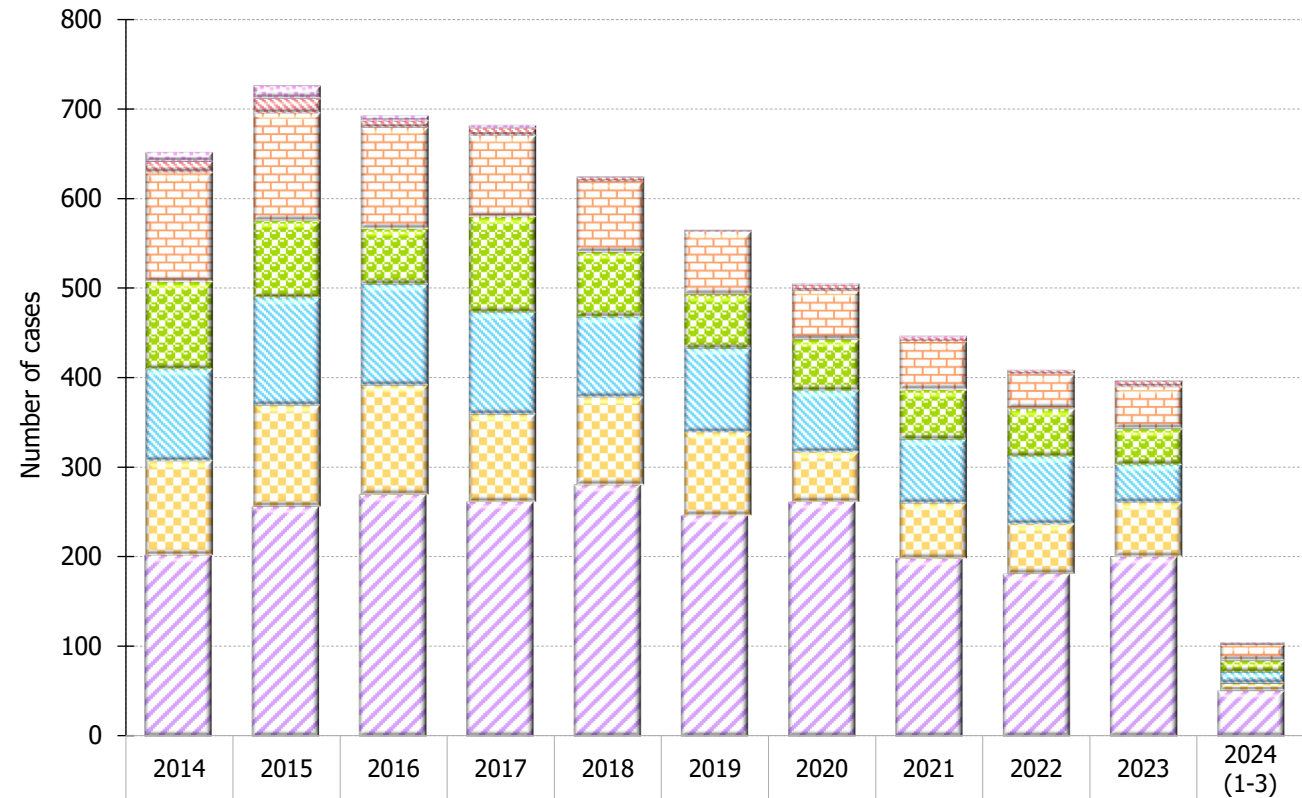
8. Source of referral of reported HIV/AIDS

Table 8.1 Source of referral of reported HIV

	This quarter (Jan - Mar 2024)	Last quarter (Oct - Dec 2023)	Same quarter last year (Jan - Mar 2023)	Cumulative (1984 – Mar 2024)
Public hospitals / clinics / laboratories	51	42	49	5,071
Private hospitals / clinics / laboratories	8	14	14	2,273
Social Hygiene Clinics	13	11	9	1,756
DH AIDS Unit	13*	8	12	1,522
AIDS service organisations (NGOs)	18	18	11	1,196
Hong Kong Red Cross Blood Transfusion Service	1	2	1	187
Drug rehabilitation services	1	0	0	138
Total	105	95	96	12,143

* Among the 13 cases reported by DH AIDS Unit, 2 were referred by AIDS service organisations for confirmatory testing.

Chart 8.1 Source of referral of reported HIV



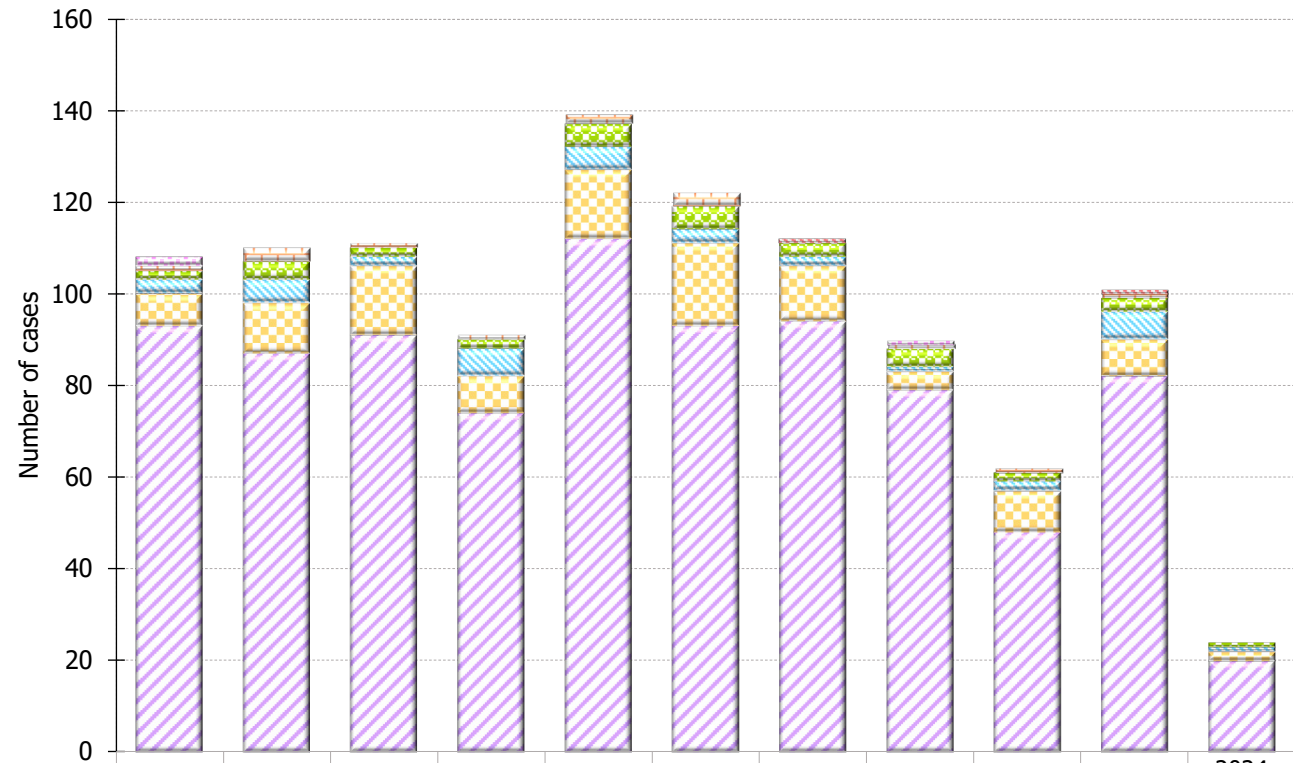
Drug rehabilitation services	10	14	6	3	1	1	2	2	1	1	1
Hong Kong Red Cross Blood Transfusion Service	12	16	7	8	4	1	6	5	4	6	1
AIDS service organisations (NGOs)	122	120	113	91	79	70	54	53	38	46	18
DH AIDS Unit	97	86	62	106	72	60	57	55	53	40	13
Social Hygiene Clinics	103	120	113	114	90	94	69	72	76	43	13
Private hospitals / clinics / laboratories	105	113	122	98	98	93	56	62	56	61	8
Public hospitals / clinics / laboratories	202	256	269	261	280	246	261	198	181	200	51

Year

Table 8.2 Source of referral of reported AIDS

	This quarter (Jan - Mar 2024)	Last quarter (Oct - Dec 2023)	Same quarter last year (Jan - Mar 2023)	Cumulative (1984 – Mar 2024)
Public hospitals / clinics / laboratories	20	9	30	1,946
Private hospitals / clinics / laboratories	2	2	2	310
Social Hygiene Clinics	1	2	2	88
DH AIDS Unit	1	1	1	124
AIDS service organisations (NGOs)	0	0	0	21
Hong Kong Red Cross Blood Transfusion Service	0	0	0	11
Drug rehabilitation services	0	0	0	7
Total	24	14	35	2,507

Chart 8.2 Source of referral of Reported AIDS



	2014	2015	2016	2017	2018	2019	2020	2021	2022	2023	2024 (1-3)
Drug rehabilitation services	2	0	0	0	0	0	0	1	0	0	0
Hong Kong Red Cross Blood Transfusion Service	0	0	0	0	0	0	1	0	0	1	0
AIDS service organisations (NGOs)	1	3	1	1	2	3	0	1	1	1	0
DH AIDS Unit	2	4	2	2	5	5	3	4	2	3	1
Social Hygiene Clinics	3	5	2	6	5	3	2	1	2	6	1
Private hospitals / clinics / laboratories	7	11	15	8	15	18	12	4	9	8	2
Public hospitals / clinics / laboratories	93	87	91	74	112	93	94	79	48	82	20

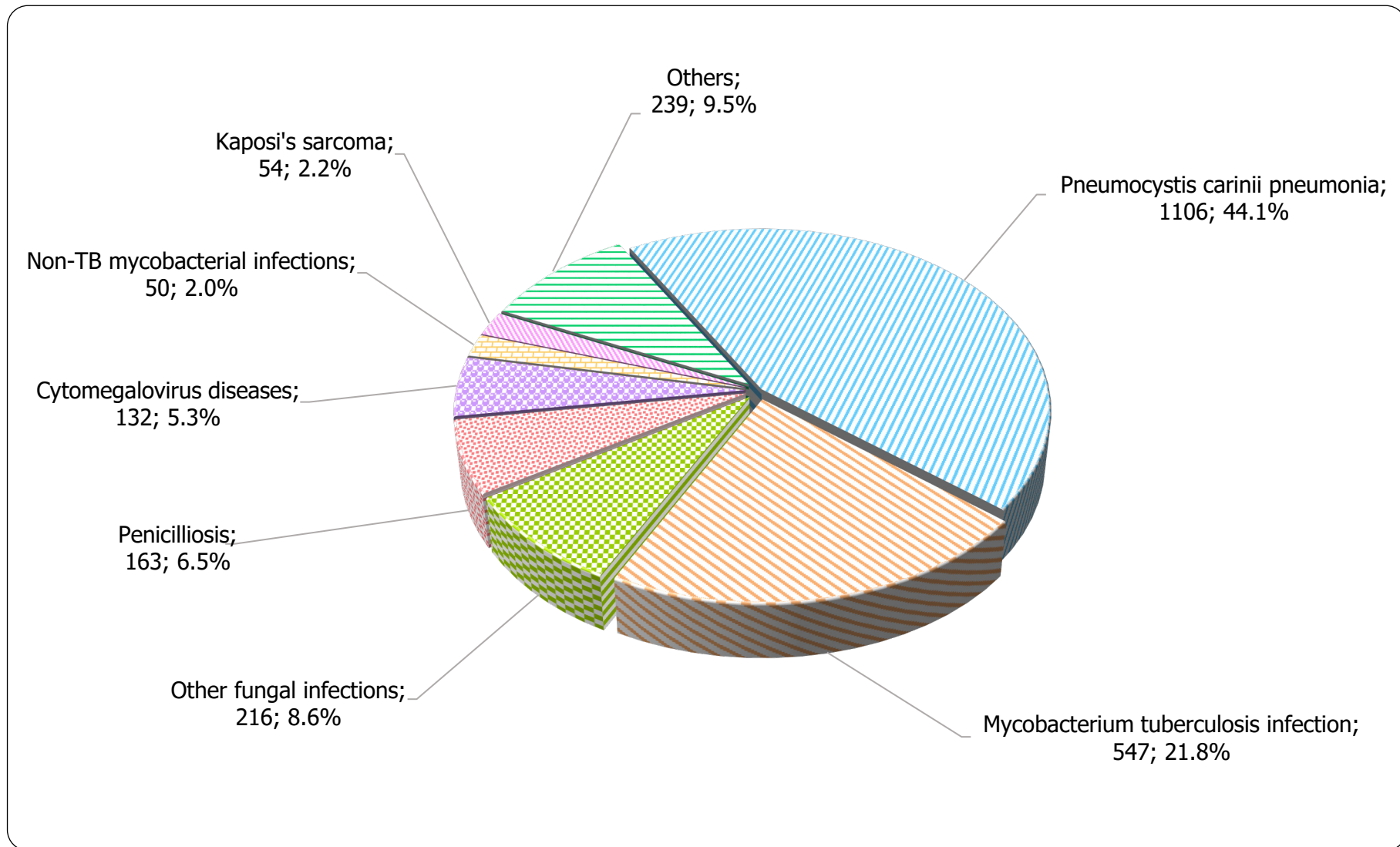
Year

9. Distribution of AIDS defining illnesses

Table 9.1 Distribution of AIDS defining illness of reported AIDS

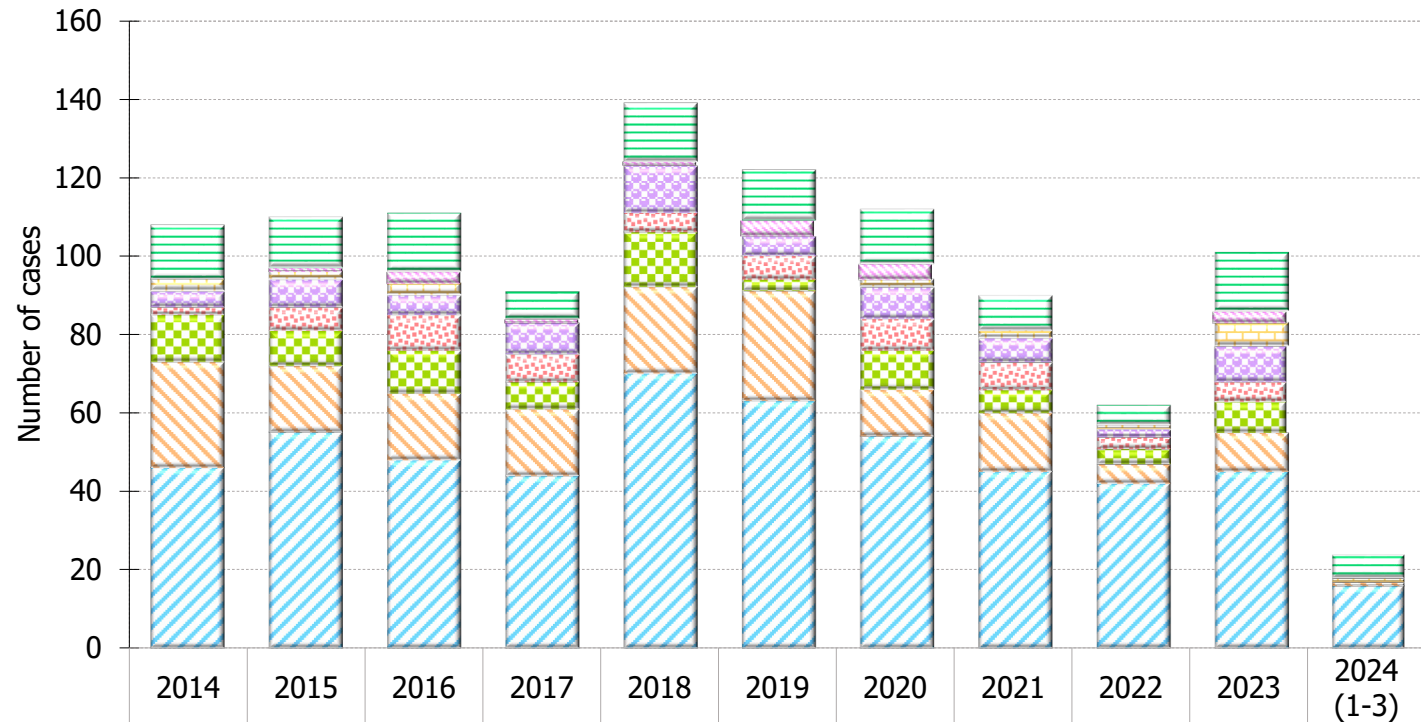
	This quarter (Jan - Mar 2024)	Last quarter (Oct - Dec 2023)	Same quarter last year (Jan - Mar 2023)	Cumulative (1984 – Mar 2024)
<i>Pneumocystis carinii pneumonia</i>	16	5	18	1,106
<i>Mycobacterium tuberculosis</i>	1	1	4	547
Other fungal infections	0	0	2	216
Penicilliosis	0	0	1	163
Cytomegalovirus diseases	0	4	4	132
Non-TB mycobacterial infections	1	1	2	50
Kaposi's sarcoma	0	2	1	54
Others	6	1	3	239
Total	24	14	35	2,507

Chart 9.1 AIDS defining illness of total reported AIDS



Format: [ADI; Number; %]

Chart 9.2 AIDS defining illness of reported AIDS by year



	2014	2015	2016	2017	2018	2019	2020	2021	2022	2023	2024 (1-3)
Others	14	13	15	7	15	13	14	9	5	15	6
Kaposi's sarcoma	0	1	3	1	1	4	4	0	0	3	0
Non-TB mycobacterial infections	3	2	3	0	0	0	2	2	1	6	1
Cytomegalovirus diseases	4	7	5	8	12	5	8	6	2	9	0
Penicilliosis	2	6	9	7	5	6	8	7	3	5	0
Other fungal infections	12	9	11	7	14	3	10	6	4	8	0
Tuberculosis	27	17	17	17	22	28	12	15	5	10	1
Pneumocystis carinii pneumonia	46	55	48	44	70	63	54	45	42	45	16

Year

10. Reported sexually transmitted infections (STIs) diagnosed in Social Hygiene Service

Table 10.1 Summary table on the reported STIs diagnosed in Social Hygiene Service

	This quarter (Jan - Mar 2024)	Last quarter (Oct - Dec 2023)	Same quarter last year (Jan - Mar 2023)	In year 2023
Syphilis				
<i>Primary</i>	26	23	13	75
<i>Secondary</i>	36	68	55	230
<i>Early latent</i>	38	37	67	207
<i>Late latent</i>	107	119	106	486
<i>Late (cardiovascular / neuro / ocular)</i>	2	4	5	12
<i>Congenital (early)</i>	0	0	0	0
<i>Congenital (late)</i>	0	0	0	0
<i>Others *</i>	8	8	3	18
Syphilis total	217	259	249	1,028

(to be cont'd)

Table 10.1 (cont'd)

	This quarter (Jan - Mar 2024)	Last quarter (Oct - Dec 2023)	Same quarter last year (Jan - Mar 2023)	In year 2023
Gonorrhoea	461	391	422	1,575
Non-gonococcal urethritis (Male)	344	267	327	1,159
Non-specific genital infection (Female)	263	273	353	1,199
Chlamydia trachomatis *	498	487	411	1,804
Genital wart	271	268	277	1,104
Herpes genitalis	142	128	118	464
Pediculosis pubis	86	69	29	179
Trichomonas	26	47	42	180
Genital ulcer	121	142	8	249
Mycoplasma genitalium *	32	16	20	67
Chancroid / Lymphogranuloma venereum	0	1	0	2
Others	89	49	63	264
Total	2,550	2,397	2,319	9,274

* Added as a new category since 2022 Q3

11. Gender distribution of reported STIs

Table 11.1 Gender distribution of selected STI reported by Social Hygiene Service

	This quarter (Jan - Mar 2024)	Last quarter (Oct - Dec 2023)	Same quarter last year (Jan - Mar 2023)	In year 2023
Primary Syphilis				
Male (M)	26	23	13	75
Female (F)	0	0	0	0
M : F	N.A.	N.A.	N.A.	N.A.
Gonorrhoea				
Male (M)	408	338	378	1,393
Female (F)	53	53	44	182
M : F	7.7 : 1	6.4 : 1	8.6 : 1	7.7 : 1
NGU / NSGI *				
Male (M)	344	267	327	1,159
Female (F)	263	273	353	1,199
M : F	1.3 : 1	1.0 : 1	0.9 : 1	1.0 : 1

(to be cont'd)

Table 11.1 (cont'd)

	This quarter (Jan - Mar 2024)	Last quarter (Oct - Dec 2023)	Same quarter last year (Jan - Mar 2023)	In year 2023
CT *				
Male (M)	333	317	332	1,285
Female (F)	165	170	79	519
M : F	2.0 : 1	1.9 : 1	4.2 : 1	2.5 : 1
Genital wart				
Male (M)	215	204	218	867
Female (F)	56	64	59	237
M : F	3.8 : 1	3.2 : 1	3.7 : 1	3.7 : 1
<i>Herpes genitalis</i>				
Male (M)	91	79	80	316
Female (F)	51	49	38	148
M : F	1.8 : 1	1.6 : 1	2.1 : 1	2.1 : 1

* NGU = Non-gonococcal urethritis

NSGI = Non-specific genital infection

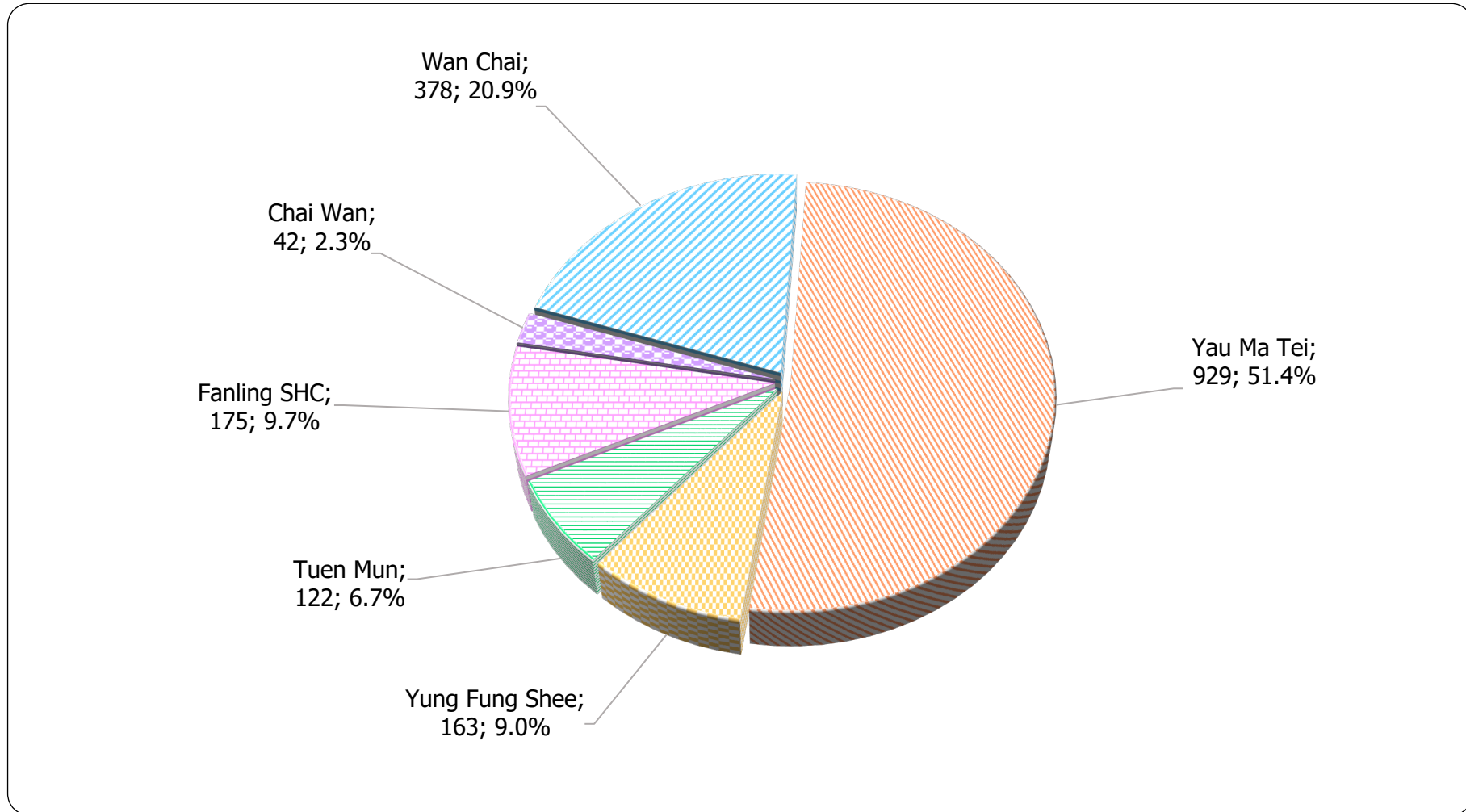
CT = Chlamydia trachomatis

Table 11.2 Gender distribution of reported STI by clinic

	This quarter (Jan - Mar 2024)		Last quarter (Oct - Dec 2023)		Same quarter last year (Jan - Mar 2023)		In year 2023	
	Male	Female	Male	Female	Male	Female	Male	Female
Chai Wan	42	6	27	3	0	0	47	13
Wan Chai	378	147	333	164	329	318	1,290	856
Yau Ma Tei	929	365	853	373	870	103	3,344	1,015
Yung Fung Shee	163	62	165	74	157	103	662	333
Tuen Mun	122	90	97	80	109	90	493	307
Fanling SHC	175	71	157	71	151	89	599	315
Total	1,809	741	1,632	765	1,616	703	6,435	2,839

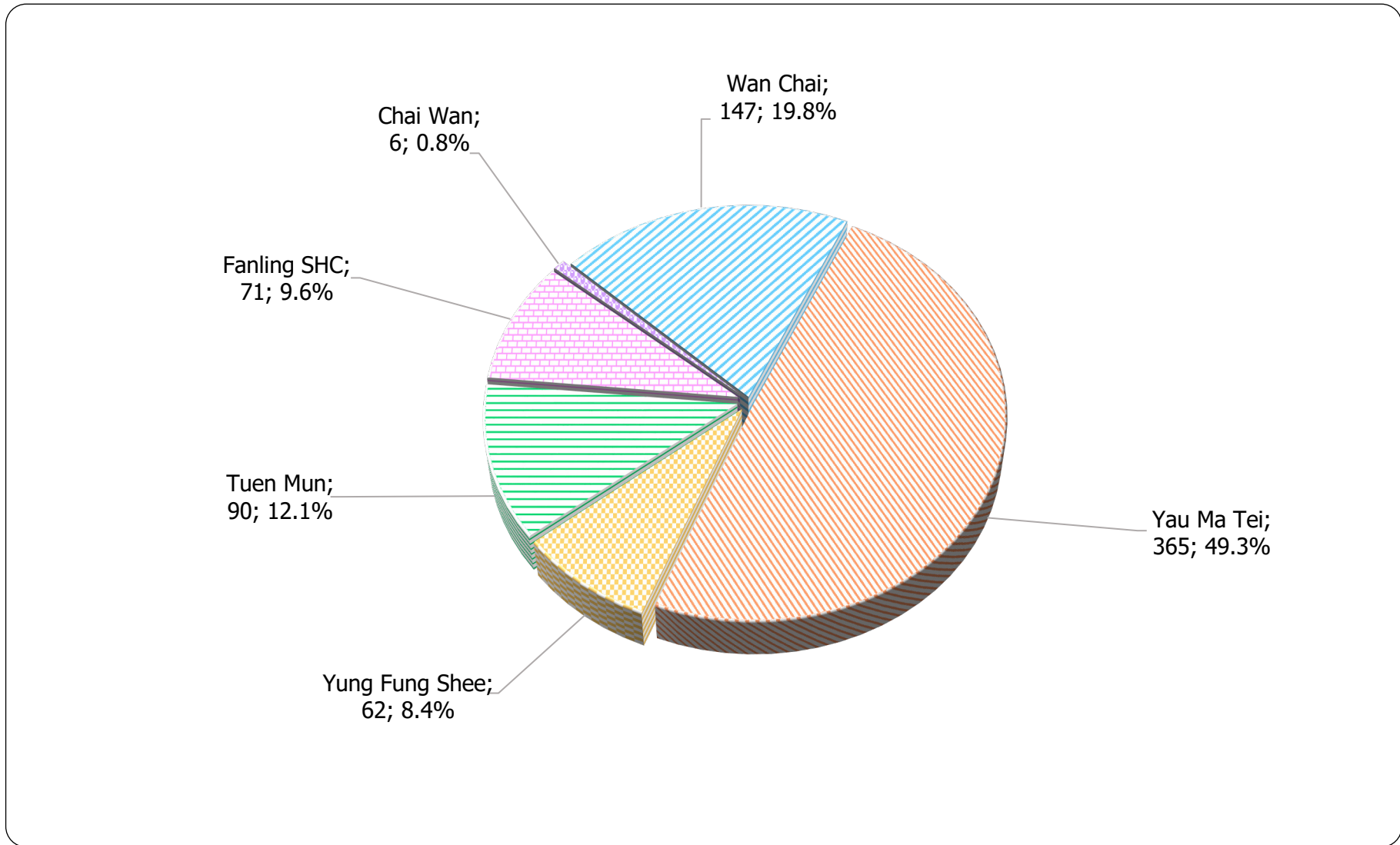
12. Clinic distribution

Chart 12.1 Number of newly report STI in Q1 2024 by clinic (male clients)



Format: [Clinic; Number; %]

Chart 12.2 Number of newly report STI in Q1 2024 by clinic (female clients)



Format: [Clinic; Number; %]