



The Hong Kong STI/AIDS update is a composite report on HIV/AIDS reporting and STI caseload statistics published quarterly. The current issue has the updated information up to June 2024.

SPP Surveillance Team:

Dr. Nicholas YUNG

Ms. Shirry WAN

Correspondence to:

Special Preventive Programme,

Centre for Health Protection, Department of Health

c/o Red Ribbon Centre, 2/F Wang Tau Hom Jockey Club Clinic,

200 Junction Road East, Kowloon, Hong Kong

Telephone: (852) 3143 7200 Facsimile: (852) 2338 0534

E-mail: aids@dh.gov.hk

List of Tables / Figures

1. NUMBER OF HIV/AIDS REPORTED	49
TABLE 1.1 SUMMARY TABLE ON THE REPORTED NUMBER OF HIV/AIDS	49
CHART 1.1 QUARTERLY NUMBER OF HIV/AIDS REPORTED	52
2. GENDER DISTRIBUTION OF REPORTED HIV/AIDS	53
TABLE 2.1 GENDER DISTRIBUTION OF REPORTED HIV	53
CHART 2.1 GENDER DISTRIBUTION OF REPORTED HIV BY QUARTER	54
CHART 2.2 GENDER DISTRIBUTION OF REPORTED HIV BY YEAR	55
TABLE 2.2 GENDER DISTRIBUTION OF REPORTED AIDS	56
CHART 2.3 GENDER DISTRIBUTION OF REPORTED AIDS BY QUARTER	57
CHART 2.4 GENDER DISTRIBUTION OF REPORTED AIDS BY YEAR	58
3. ETHNICITY OF REPORTED HIV/AIDS	59
TABLE 3.1 DISTRIBUTION OF ETHNICITY OF REPORTED HIV	59
CHART 3.1 DISTRIBUTION OF ETHNICITY OF REPORTED HIV	60
TABLE 3.2 DISTRIBUTION OF ETHNICITY OF REPORTED AIDS	61
CHART 3.2 DISTRIBUTION OF ETHNICITY OF REPORTED AIDS	62
4. AGE DISTRIBUTION OF REPORTED HIV/AIDS	63
TABLE 4.1 AGE DISTRIBUTION OF REPORTED HIV	63
CHART 4.1 AGE DISTRIBUTION OF REPORTED HIV	64
CHART 4.2 AGE GROUP & GENDER OF TOTAL REPORTED HIV	65
TABLE 4.2 AGE DISTRIBUTION OF REPORTED AIDS	66
CHART 4.3 AGE DISTRIBUTION OF REPORTED AIDS	67
CHART 4.4 AGE GROUP & GENDER OF TOTAL REPORTED AIDS	68
5. EXPOSURE CATEGORIES OF REPORTED HIV/AIDS	69
TABLE 5.1 EXPOSURE CATEGORIES OF REPORTED HIV	69
CHART 5.1 EXPOSURE CATEGORIES OF REPORTED HIV	70
TABLE 5.2 EXPOSURE CATEGORIES OF REPORTED AIDS	71
CHART 5.2 EXPOSURE CATEGORIES OF REPORTED AIDS	72

6. RATIO (HETEROSEXUAL : HOMOSEXUAL / BISEXUAL) OF SEXUALLY ACQUIRED HIV INFECTION IN MEN	73
TABLE 6.1 RATIO OF SEXUALLY ACQUIRED INFECTION IN MEN WITH REPORTED HIV/AIDS (HETEROSEXUAL : HOMO / BISEXUAL) BY QUARTER	73
TABLE 6.2 RATIO OF SEXUALLY ACQUIRED INFECTION IN MEN WITH REPORTED HIV/AIDS (HETEROSEXUAL : HOMO / BISEXUAL) BY YEAR	74
7. INJECTING DRUG USERS IN REPORTED HIV/AIDS	75
TABLE 7.1 INJECTING DRUG USERS IN REPORTED HIV/AIDS	75
TABLE 7.2 NUMBER OF INJECTING DRUG USER IN REPORTED HIV/AIDS BY YEAR	76
8. SOURCE OF REFERRAL OF REPORTED HIV/AIDS	77
TABLE 8.1 SOURCE OF REFERRAL OF REPORTED HIV	77
CHART 8.1 SOURCE OF REFERRAL OF REPORTED HIV	78
TABLE 8.2 SOURCE OF REFERRAL OF REPORTED AIDS	79
CHART 8.2 SOURCE OF REFERRAL OF REPORTED AIDS	80
9. DISTRIBUTION OF AIDS DEFINING ILLNESSES	81
TABLE 9.1 DISTRIBUTION OF AIDS DEFINING ILLNESS OF REPORTED AIDS	81
CHART 9.1 AIDS DEFINING ILLNESS OF TOTAL REPORTED AIDS	82
CHART 9.2 AIDS DEFINING ILLNESS OF REPORTED AIDS BY YEAR	83
10. REPORTED SEXUALLY TRANSMITTED INFECTIONS (STIS) DIAGNOSED IN SOCIAL HYGIENE SERVICE	84
TABLE 10.1 SUMMARY TABLE ON THE REPORTED STIS DIAGNOSED IN SOCIAL HYGIENE SERVICE	84
11. GENDER DISTRIBUTION OF REPORTED STIS	86
TABLE 11.1 GENDER DISTRIBUTION OF SELECTED STI REPORTED BY SOCIAL HYGIENE SERVICE	86
TABLE 11.2 GENDER DISTRIBUTION OF REPORTED STI BY CLINIC	88
12. CLINIC DISTRIBUTION	89
CHART 12.1 NUMBER OF NEWLY REPORT STI IN Q2 2024 BY CLINIC (MALE CLIENTS)	89
CHART 12.2 NUMBER OF NEWLY REPORT STI IN Q2 2024 BY CLINIC (FEMALE CLIENTS)	90

1. Number of HIV/AIDS reported

Table 1.1 Summary table on the reported number of HIV/AIDS

	This quarter (Apr - Jun 2024)		Last quarter (Jan - Mar 2024)		Same quarter last year (Apr - Jun 2023)		Cumulative (1984 – Jun 2024)	
	HIV	AIDS	HIV	AIDS	HIV	AIDS	HIV	AIDS
Sex								
Male	60	15	83	17	72	19	10,010	2,088
Female	20	1	22	7	21	5	2,213	435
Ethnicity / race								
Chinese	58	15	72	17	72	19	8,405	1,947
Non-Chinese	14	1	21	7	12	5	3,253	576
<i>Asian</i>	<i>10</i>	<i>1</i>	<i>13</i>	<i>6</i>	<i>10</i>	<i>4</i>	<i>1,700</i>	<i>410</i>
<i>White</i>	<i>1</i>	<i>0</i>	<i>4</i>	<i>0</i>	<i>0</i>	<i>0</i>	<i>674</i>	<i>110</i>
<i>Black</i>	<i>2</i>	<i>0</i>	<i>3</i>	<i>1</i>	<i>2</i>	<i>1</i>	<i>288</i>	<i>47</i>
<i>Others</i>	<i>1</i>	<i>0</i>	<i>1</i>	<i>0</i>	<i>0</i>	<i>0</i>	<i>591</i>	<i>9</i>
Unknown	8	0	12	0	9	0	565	0

(to be cont'd)

Table 1.1 (cont'd)

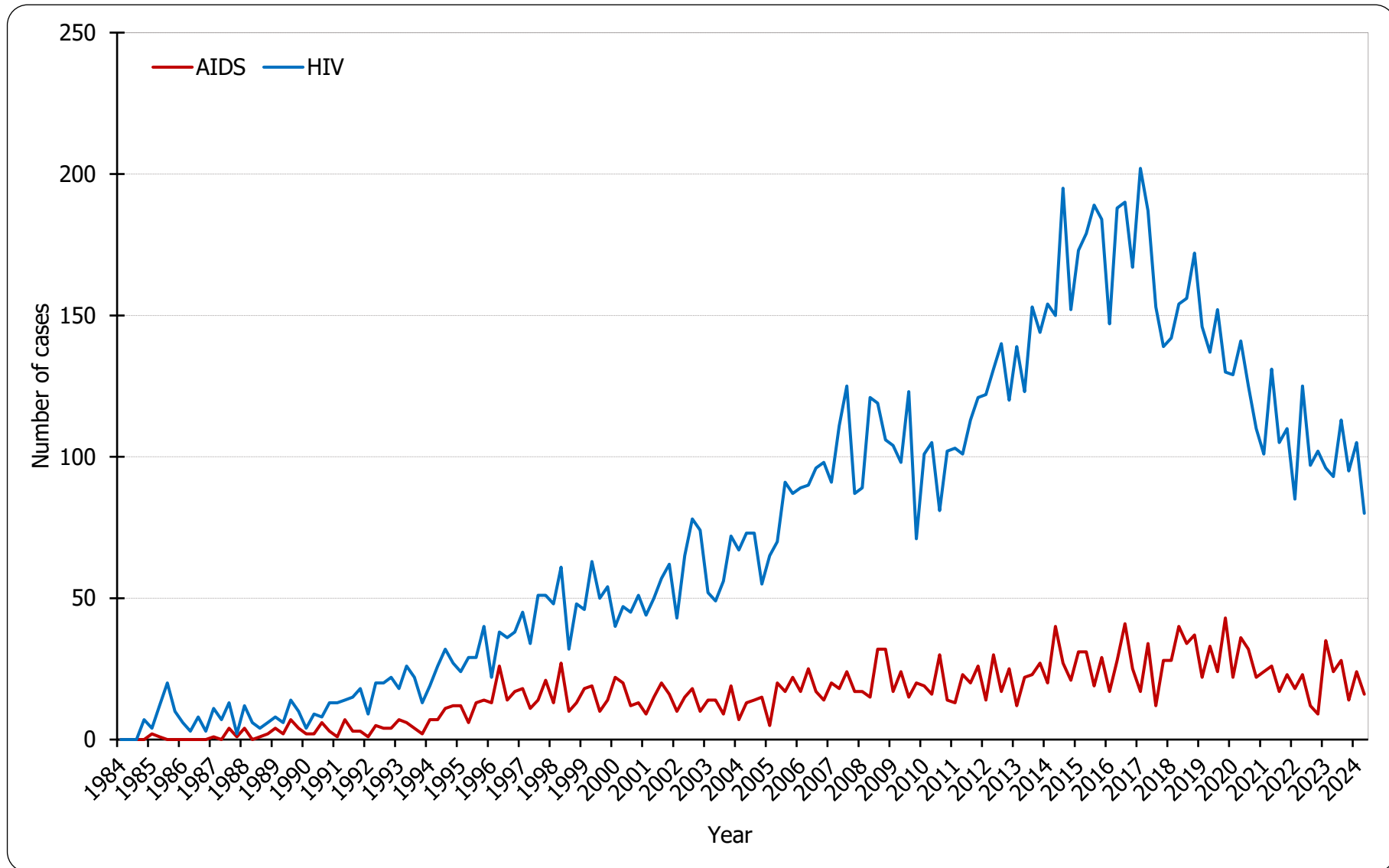
	This quarter (Apr - Jun 2024)		Last quarter (Jan - Mar 2024)		Same quarter last year (Apr - Jun 2023)		Cumulative (1984 – Jun 2024)	
	HIV	AIDS	HIV	AIDS	HIV	AIDS	HIV	AIDS
Age at diagnosis								
Adult	80	16	105	24	93	24	12,167	2,509
Child (age 13 or less)	0	0	0	0	0	0	56	14
Exposure category								
Heterosexual	26	4	24	11	33	10	3,910	1,261
Homosexual	37	9	55	9	32	9	5,137	812
Bisexual	5	3	9	2	11	3	732	179
Injecting drug use	0	0	0	0	3	1	383	70
Blood / blood product infusion	0	0	0	0	0	0	87	26
Mother-to-child transmission	0	0	0	0	0	0	36	11
Undetermined	12	0	17	2	14	1	1,938	164

(to be cont'd)

Table 1.1 (cont'd)

	This quarter (Apr - Jun 2024)		Last quarter (Jan - Mar 2024)		Same quarter last year (Apr - Jun 2023)		Cumulative (1984 – Jun 2024)	
	HIV	AIDS	HIV	AIDS	HIV	AIDS	HIV	AIDS
Source of referral								
Public hospitals / clinics / laboratories	34	15	51	20	48	19	5,105	1,961
Private hospitals / clinics / laboratories	12	1	8	2	12	2	2,285	311
Social Hygiene Clinics	11	0	13	1	10	1	1,767	88
DH AIDS Unit	8	0	13	1	11	0	1,530	124
AIDS service organisations (NGOs)	13	0	18	0	10	1	1,209	21
Hong Kong Red Cross Blood Transfusion Service	1	0	1	0	1	1	188	11
Drug rehabilitation services	1	0	1	0	1	0	139	7
Total	80	16	105	24	93	24	12,223	2,523

Chart 1.1 Quarterly Number of HIV/AIDS reported



2. Gender distribution of reported HIV/AIDS

Table 2.1 Gender distribution of reported HIV

	This quarter (Apr - Jun 2024)	Last quarter (Jan - Mar 2024)	Same quarter last year (Apr - Jun 2023)	Cumulative (1984 – Jun 2024)
Male	60	83	72	10,010
Female	20	22	21	2,213
Total	80	105	93	12,223

Chart 2.1 Gender distribution of reported HIV by quarter

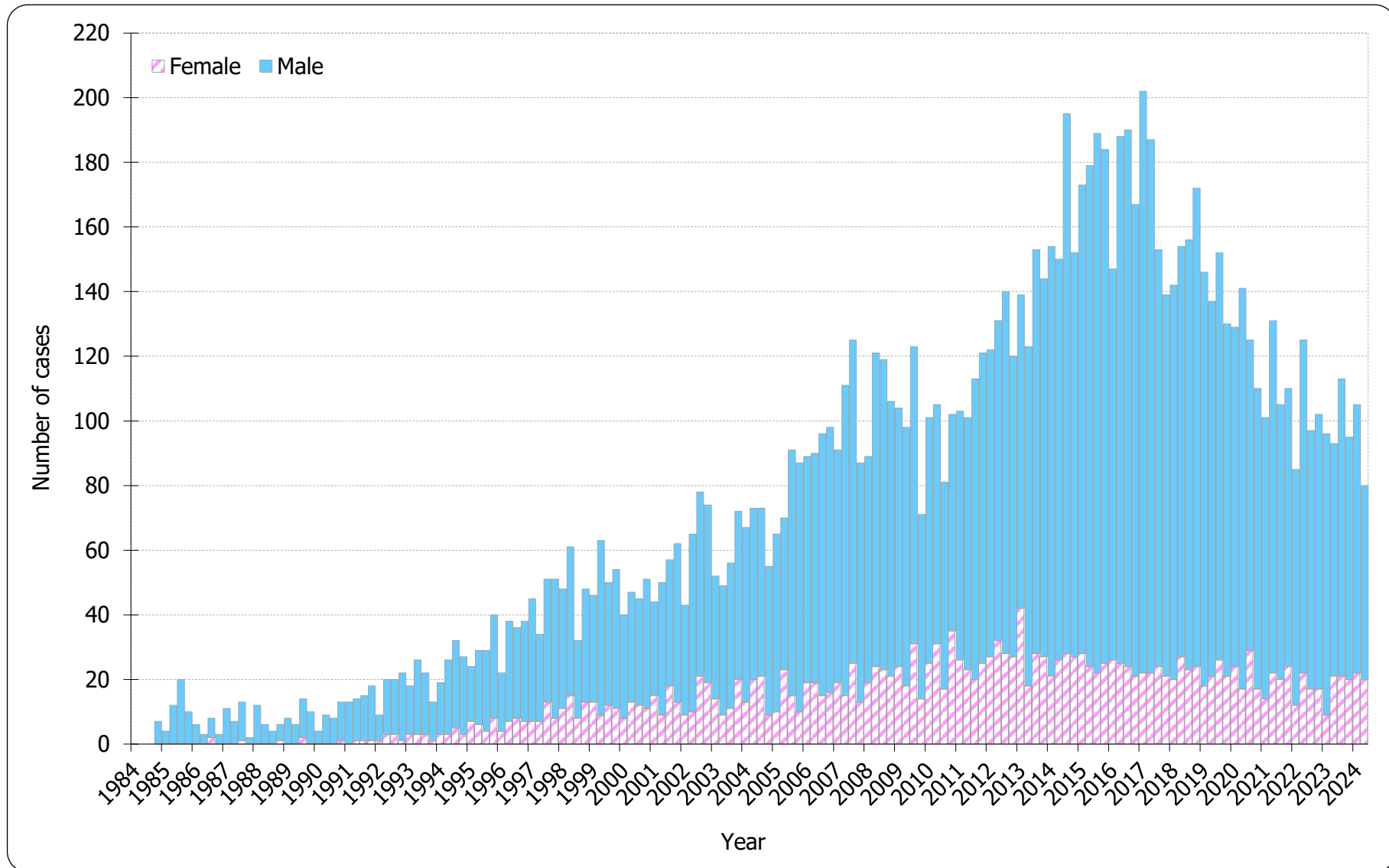


Chart 2.2 Gender distribution of reported HIV by year

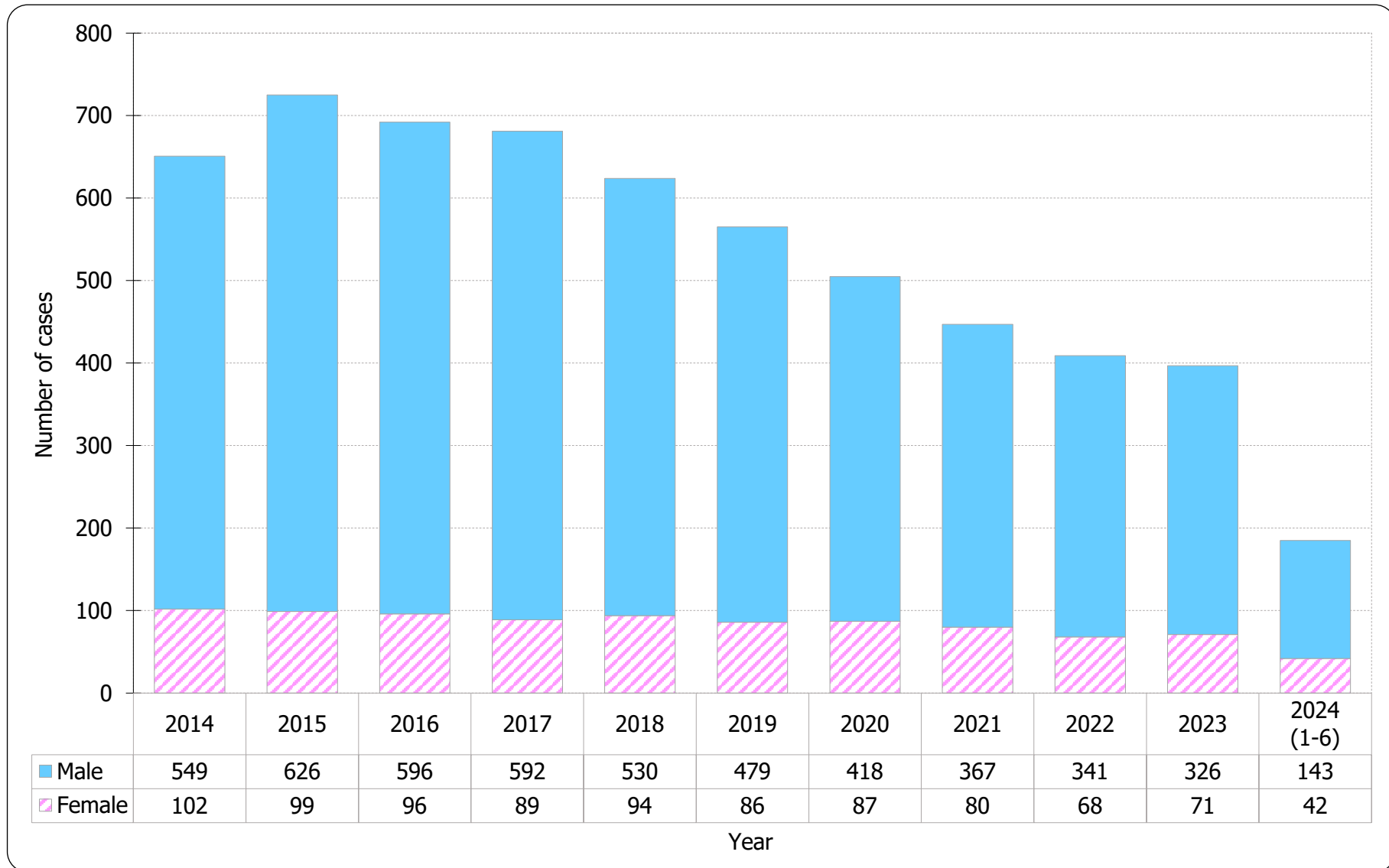


Table 2.2 Gender distribution of reported AIDS

	This quarter (Apr - Jun 2024)	Last quarter (Jan - Mar 2024)	Same quarter last year (Apr - Jun 2023)	Cumulative (1984 – Jun 2024)
Male	15	17	19	2,088
Female	1	7	5	435
Total	16	24	24	2,523

Chart 2.3 Gender distribution of reported AIDS by quarter

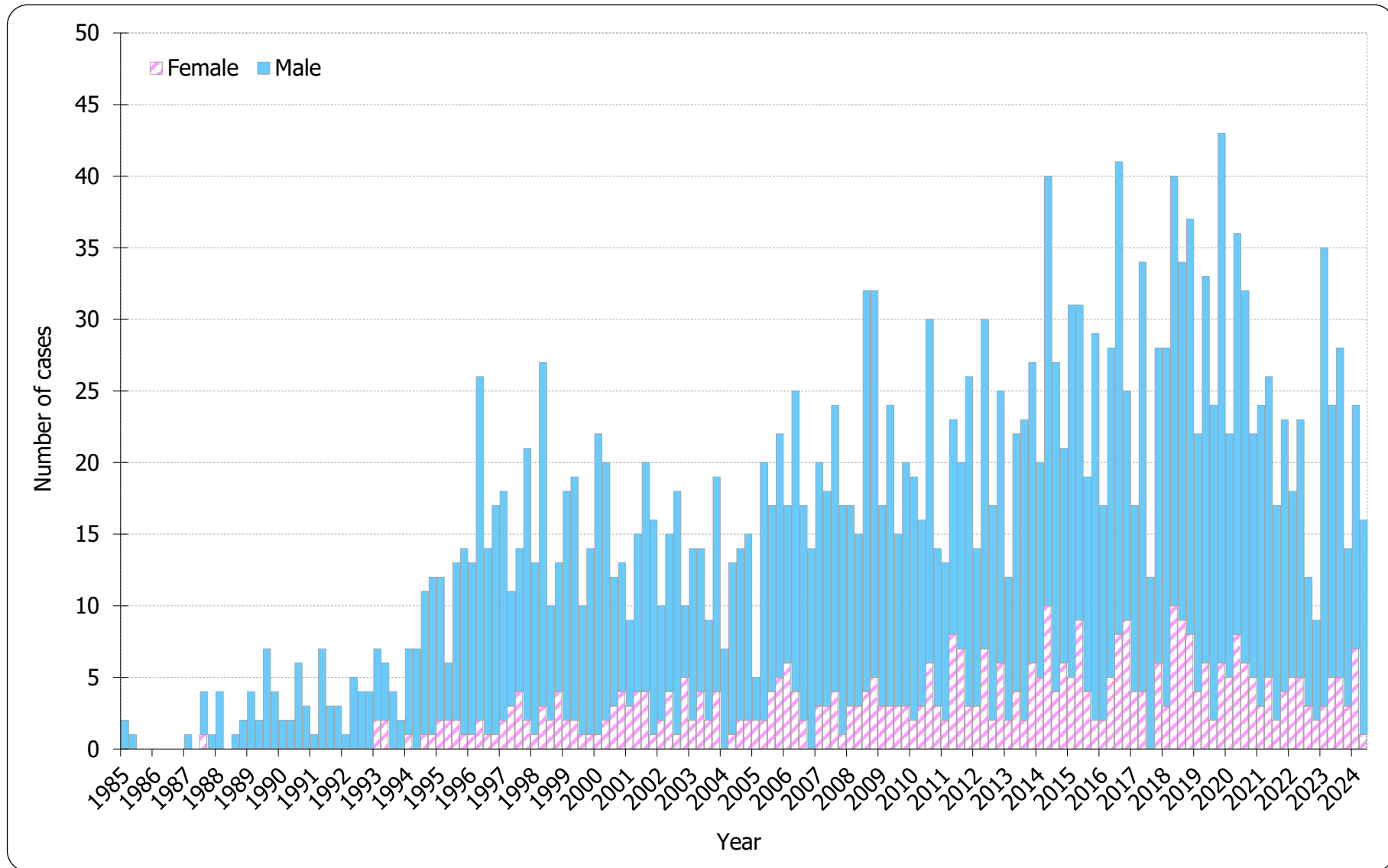
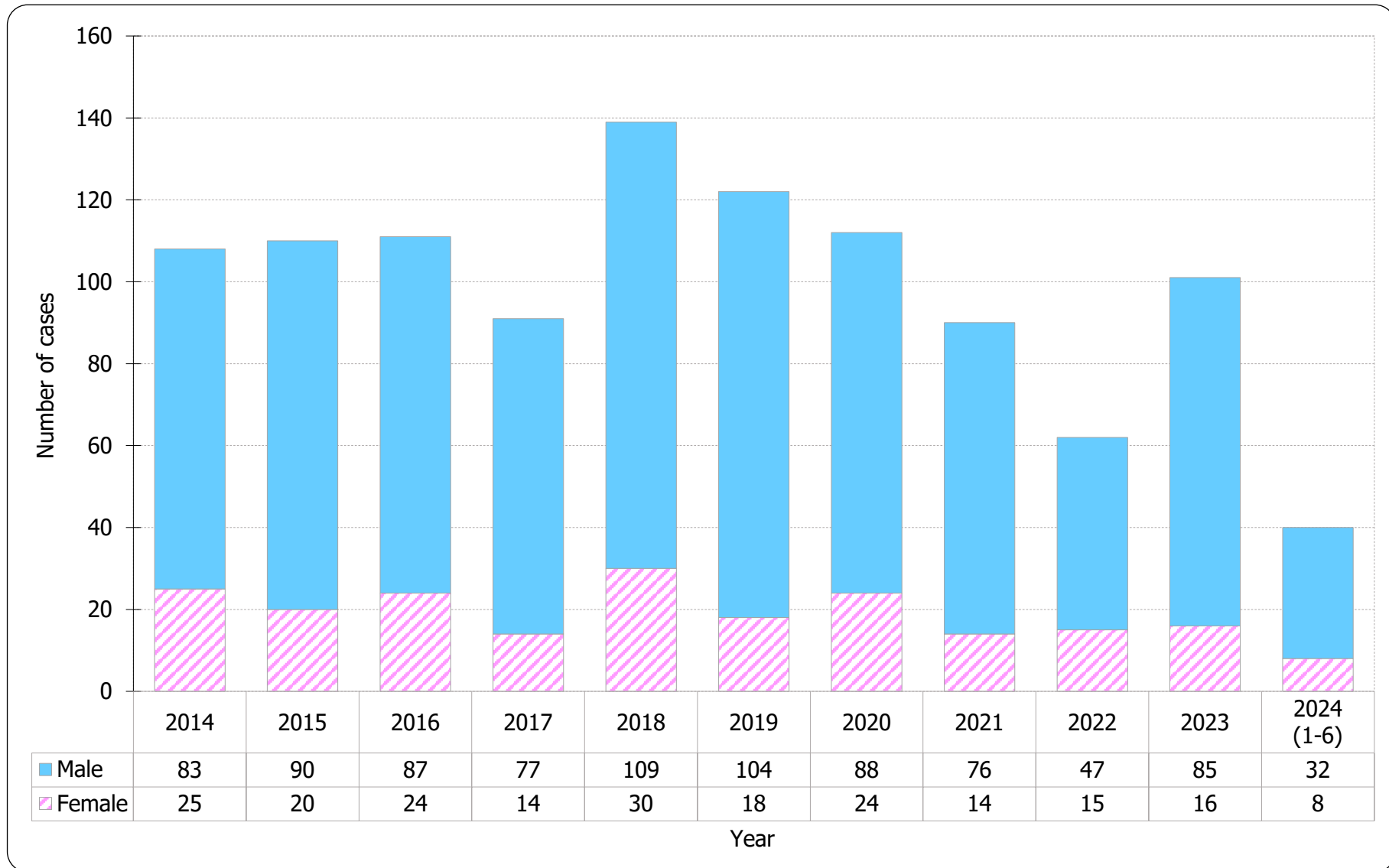


Chart 2.4 Gender distribution of reported AIDS by year



3. Ethnicity of reported HIV/AIDS

Table 3.1 Distribution of ethnicity of reported HIV

	This quarter (Apr - Jun 2024)	Last quarter (Jan - Mar 2024)	Same quarter last year (Apr - Jun 2023)	Cumulative (1984 – Jun 2024)
Chinese	58	72	72	8,405
Non-Chinese	14	21	12	3,253
<i>Asian</i>	<i>10</i>	<i>13</i>	<i>10</i>	<i>1,700</i>
<i>White</i>	<i>1</i>	<i>4</i>	<i>0</i>	<i>674</i>
<i>Black</i>	<i>2</i>	<i>3</i>	<i>2</i>	<i>288</i>
<i>Others</i>	<i>1</i>	<i>1</i>	<i>0</i>	<i>591</i>
Unknown	8	12	9	565
Total	80	105	93	12,223

Chart 3.1 Distribution of ethnicity of reported HIV

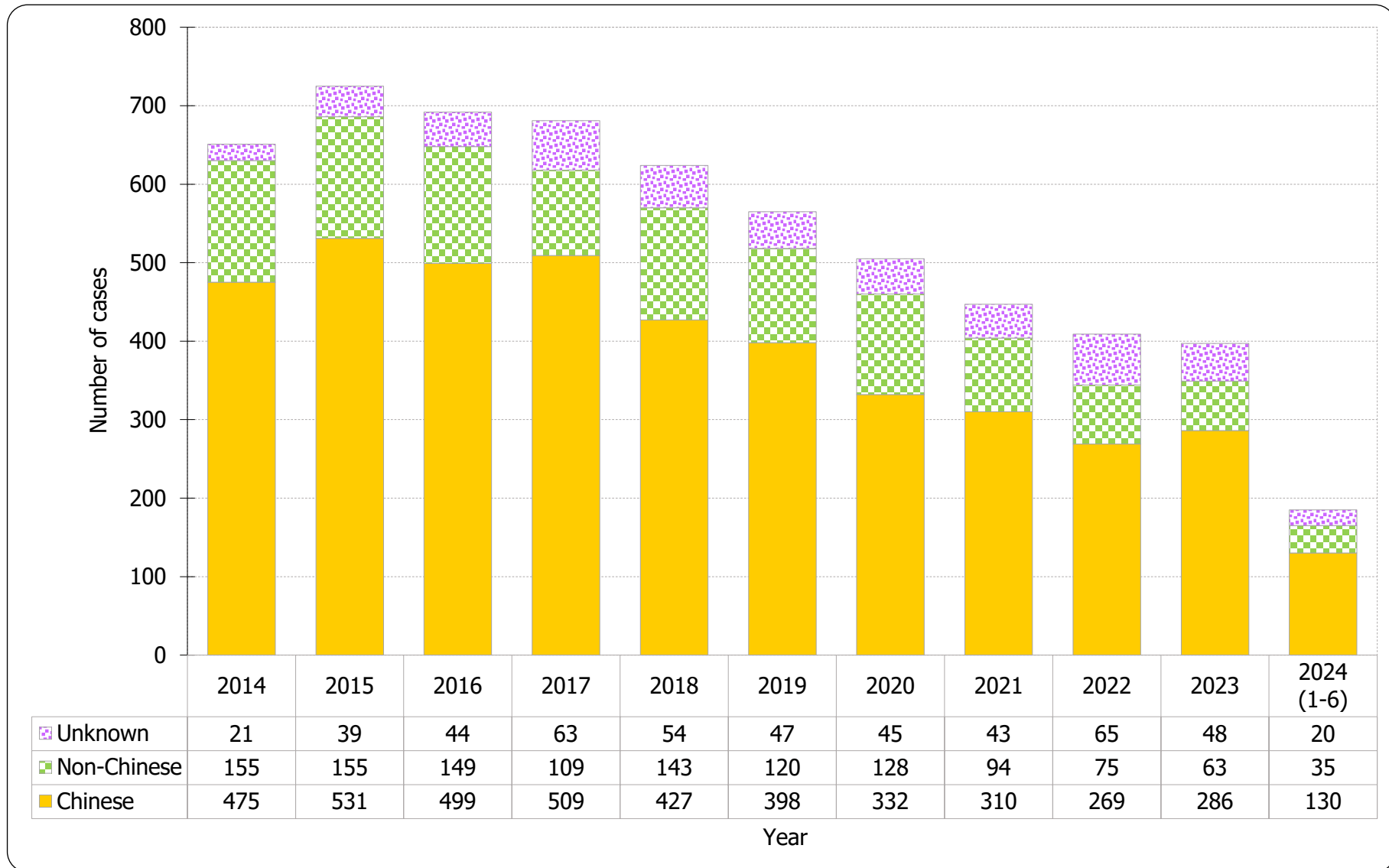
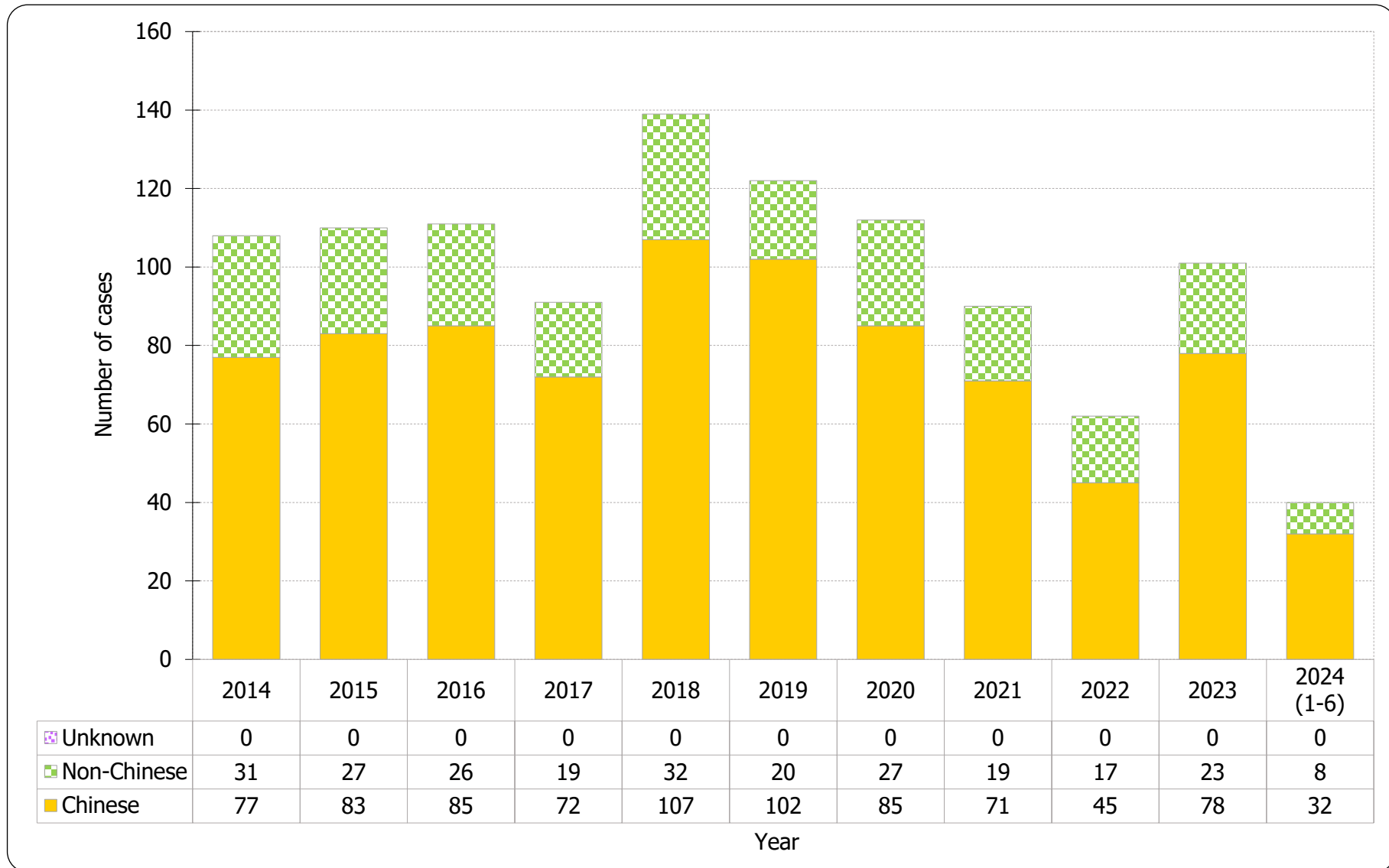


Table 3.2 Distribution of ethnicity of reported AIDS

	This quarter (Apr - Jun 2024)	Last quarter (Jan - Mar 2024)	Same quarter last year (Apr - Jun 2023)	Cumulative (1984 – Jun 2024)
Chinese	15	17	19	1,947
Non-Chinese	1	7	5	576
<i>Asian</i>	<i>1</i>	<i>6</i>	<i>4</i>	<i>410</i>
<i>White</i>	<i>0</i>	<i>0</i>	<i>0</i>	<i>110</i>
<i>Black</i>	<i>0</i>	<i>1</i>	<i>1</i>	<i>47</i>
<i>Others</i>	<i>0</i>	<i>0</i>	<i>0</i>	<i>9</i>
Unknown	0	0	0	0
Total	16	24	24	2,523

Chart 3.2 Distribution of ethnicity of reported AIDS



4. Age distribution of reported HIV/AIDS

Table 4.1 Age distribution of reported HIV

	This quarter (Apr - Jun 2024)	Last quarter (Jan - Mar 2024)	Same quarter last year (Apr - Jun 2023)	Cumulative (1984 – Jun 2024)
Adult	80	105	93	12,167
Child (age 13 or less)	0	0	0	56
Total	80	105	93	12,223

Chart 4.1 Age distribution of reported HIV

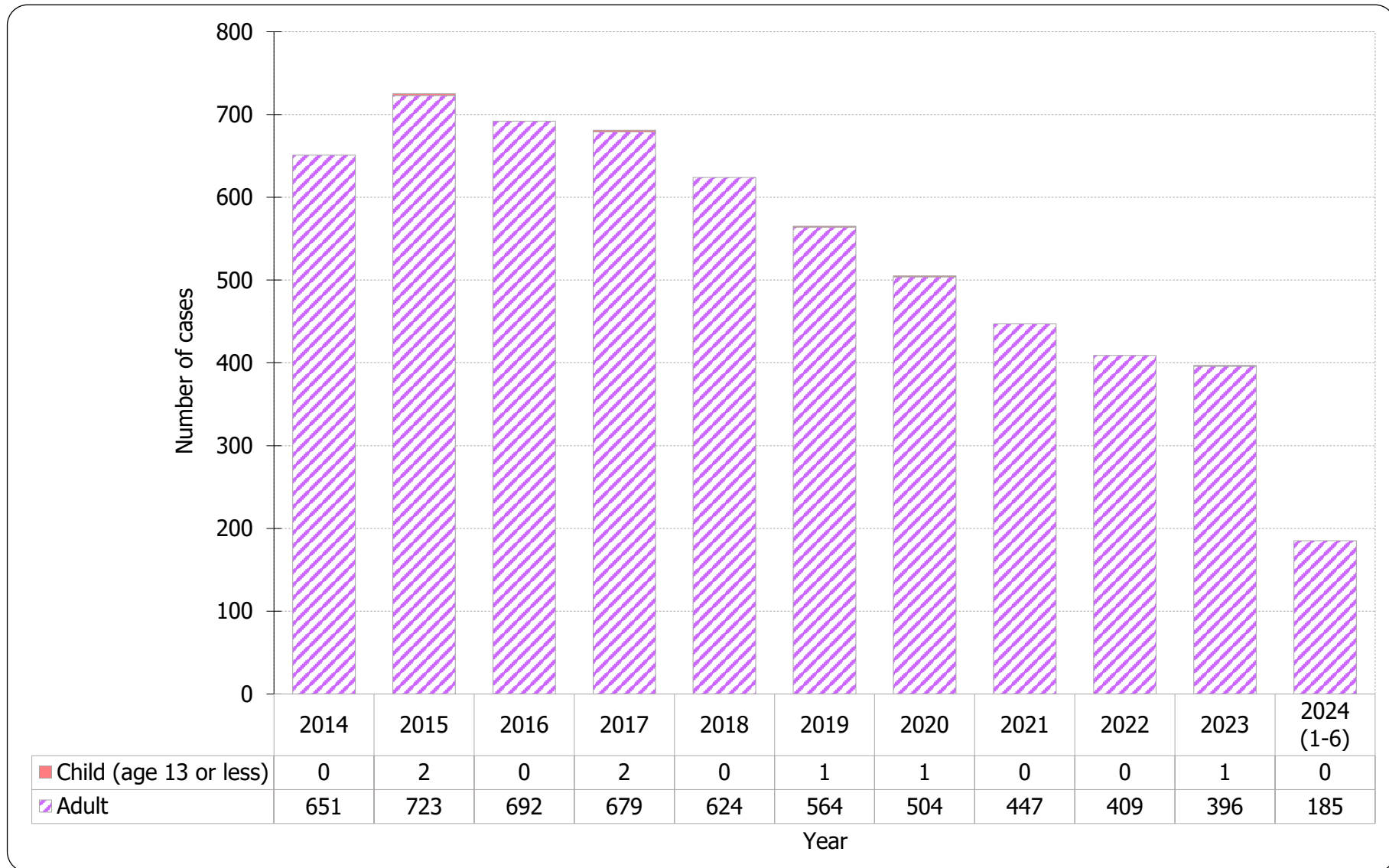


Chart 4.2 Age group & gender of total reported HIV

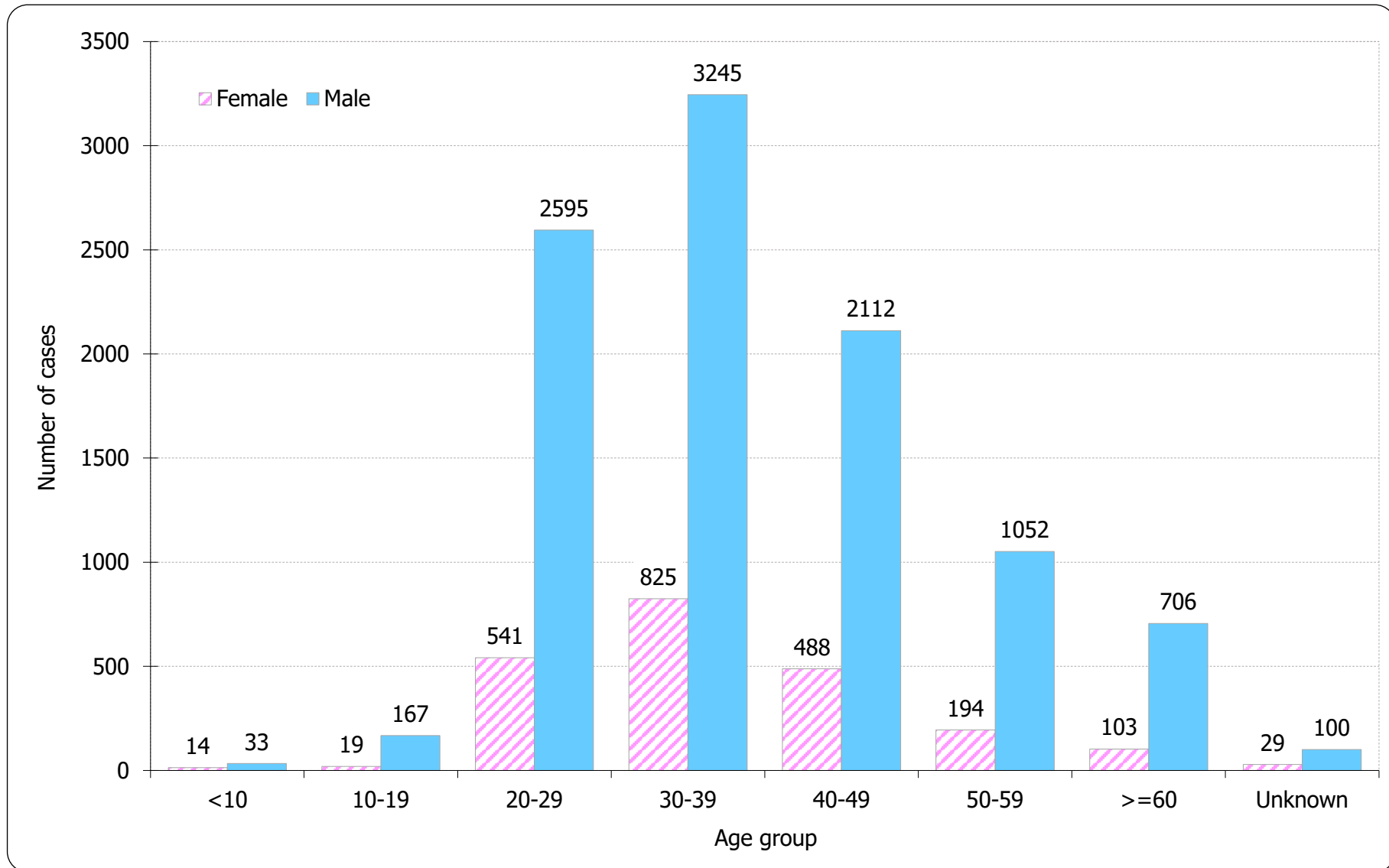


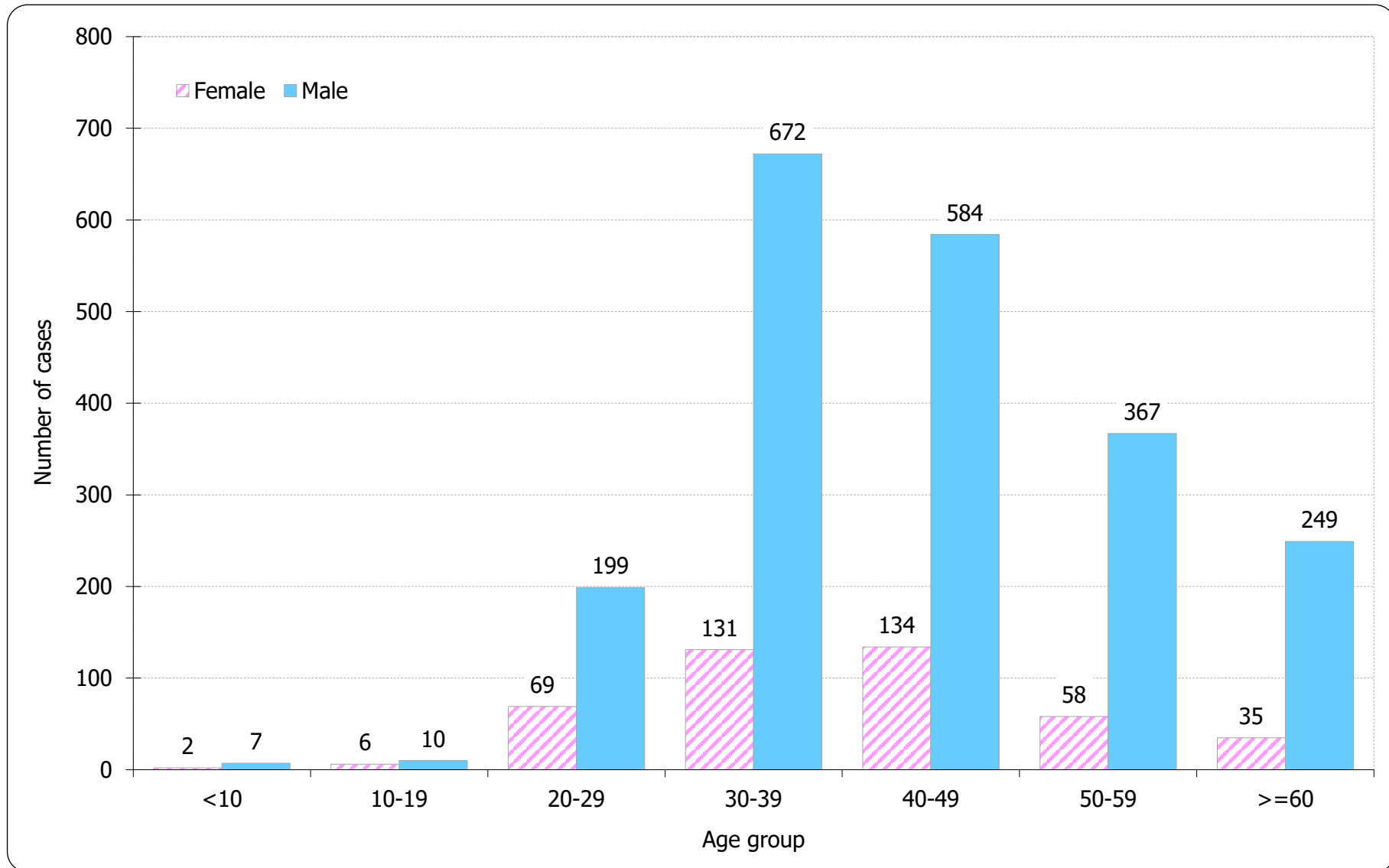
Table 4.2 Age distribution of reported AIDS

	This quarter (Apr - Jun 2024)	Last quarter (Jan - Mar 2024)	Same quarter last year (Apr - Jun 2023)	Cumulative (1984 – Jun 2024)
Adult	16	24	24	2,509
Child (age 13 or less)	0	0	0	14
Total	16	24	24	2,523

Chart 4.3 Age distribution of reported AIDS



Chart 4.4 Age group & gender of total reported AIDS



5. Exposure categories of reported HIV/AIDS

Table 5.1 Exposure categories of reported HIV

	This quarter (Apr - Jun 2024)	Last quarter (Jan - Mar 2024)	Same quarter last year (Apr - Jun 2023)	Cumulative (1984 – Jun 2024)
Heterosexual	26	24	33	3,910
Homosexual	37	55	32	5,137
Bisexual	5	9	11	732
Injecting drug use	0	0	3	383
Blood / blood product infusion	0	0	0	87
Mother-to-child transmission	0	0	0	36
Undetermined	12	17	14	1,938
Total	80	105	93	12,223

Chart 5.1 Exposure categories of reported HIV

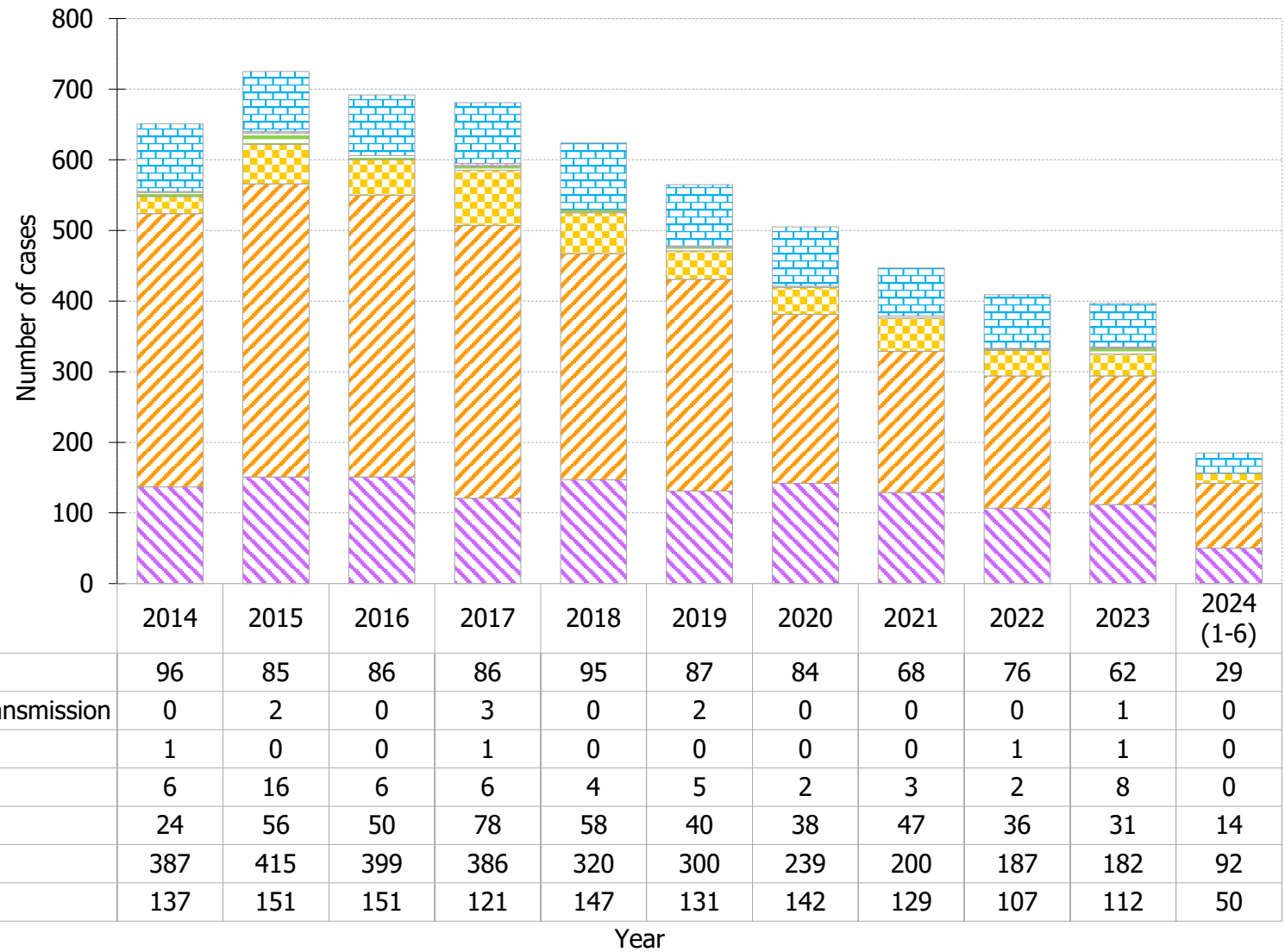
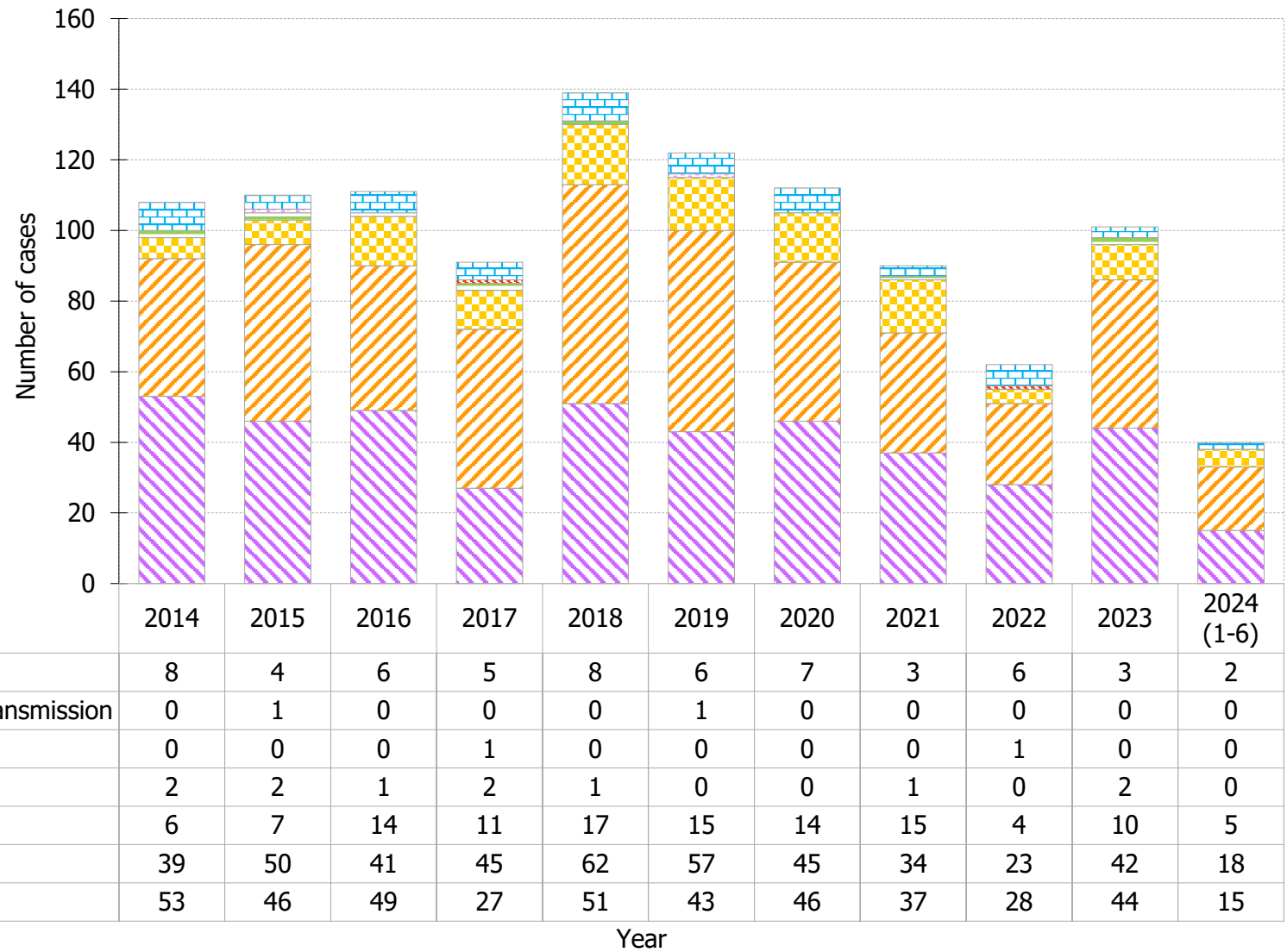


Table 5.2 Exposure categories of reported AIDS

	This quarter (Apr - Jun 2024)	Last quarter (Jan - Mar 2024)	Same quarter last year (Apr - Jun 2023)	Cumulative (1984 – Jun 2024)
Heterosexual	4	11	10	1,261
Homosexual	9	9	9	812
Bisexual	3	2	3	179
Injecting drug use	0	0	1	70
Blood / blood product infusion	0	0	0	26
Mother-to-child transmission	0	0	0	11
Undetermined	0	2	1	164
Total	16	24	24	2,523

Chart 5.2 Exposure categories of reported AIDS



6. Ratio (heterosexual : homosexual / bisexual) of sexually acquired HIV infection in men

Table 6.1 Ratio of sexually acquired infection in men with reported HIV/AIDS (heterosexual : homo / bisexual) by quarter

	This quarter (Apr - Jun 2024)	Last quarter (Jan - Mar 2024)	Same quarter last year (Apr - Jun 2023)	Cumulative (1984 – Jun 2024)
HIV	0.3 : 1	0.1 : 1	0.4 : 1	0.4 : 1
AIDS	0.3 : 1	0.5 : 1	0.4 : 1	0.9 : 1

Table 6.2 Ratio of sexually acquired infection in men with reported HIV/AIDS (heterosexual : homo / bisexual) by year

	2014	2015	2016	2017	2018	2019	2020	2021	2022	2023	2024 (1-6)	1984 – Jun 2024
HIV	0.2 : 1	0.2 : 1	0.2 : 1	0.1 : 1	0.2 : 1	0.2 : 1	0.3 : 1	0.3 : 1	0.3 : 1	0.3 : 1	0.2 : 1	0.4 : 1
AIDS	0.7 : 1	0.5 : 1	0.5 : 1	0.3 : 1	0.3 : 1	0.4 : 1	0.4 : 1	0.5 : 1	0.6 : 1	0.6 : 1	0.3 : 1	0.9 : 1

7. Injecting drug users in reported HIV/AIDS

Table 7.1 Injecting drug users in reported HIV/AIDS

	This quarter (Apr - Jun 2024)	Last quarter (Jan - Mar 2024)	Same quarter last year (Apr - Jun 2023)	Cumulative (1984 – Jun 2024)
HIV (% of reported HIV)	0 0.0%	0 0.0%	3 3.2%	383 3.1%
AIDS (% of reported AIDS)	0 0.0%	0 0.0%	1 4.2%	70 2.8%

Table 7.2 Number of injecting drug user in reported HIV/AIDS by year

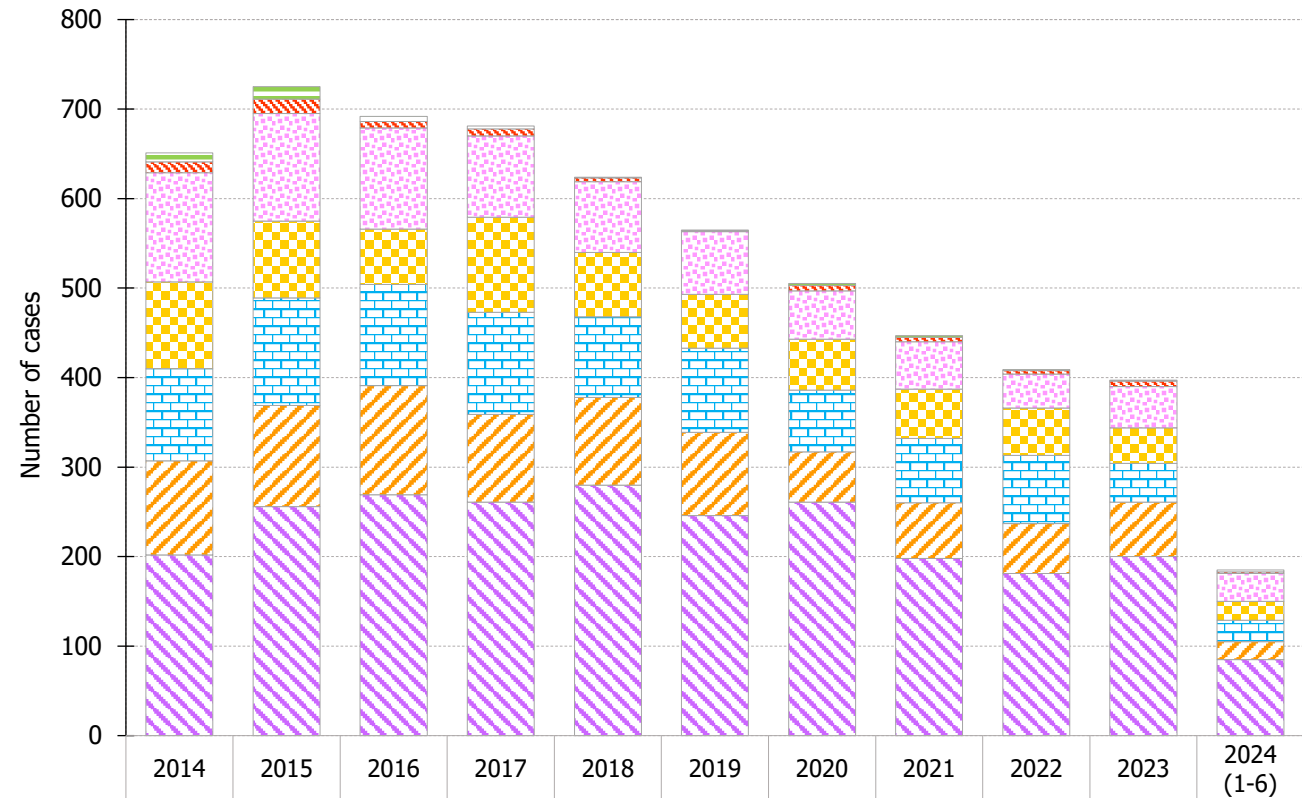
	2014	2015	2016	2017	2018	2019	2020	2021	2022	2023	2024 (1-6)	1984 – Jun 2024
HIV (% of reported HIV)	6 (0.9%)	16 (2.2%)	6 (0.9%)	6 (0.9%)	4 (0.6%)	5 (0.9%)	2 (0.4%)	3 (0.7%)	2 (0.5%)	8 (2.0%)	0 (0.0%)	383 (3.1%)
AIDS (% of reported AIDS)	2 (1.9%)	2 (1.8%)	1 (0.9%)	2 (2.2%)	1 (0.7%)	0 (0.0%)	0 (0.0%)	1 (1.1%)	0 (0.0%)	2 (2.0%)	0 (0.0%)	70 (2.8%)

8. Source of referral of reported HIV/AIDS

Table 8.1 Source of referral of reported HIV

	This quarter (Apr - Jun 2024)	Last quarter (Jan - Mar 2024)	Same quarter last year (Apr - Jun 2023)	Cumulative (1984 – Jun 2024)
Public hospitals / clinics / laboratories	34	51	48	5,105
Private hospitals / clinics / laboratories	12	8	12	2,285
Social Hygiene Clinics	11	13	10	1,767
DH AIDS Unit	8	13	11	1,530
AIDS service organisations (NGOs)	13	18	10	1,209
Hong Kong Red Cross Blood Transfusion Service	1	1	1	188
Drug rehabilitation services	1	1	1	139
Total	80	105	93	12,223

Chart 8.1 Source of referral of reported HIV



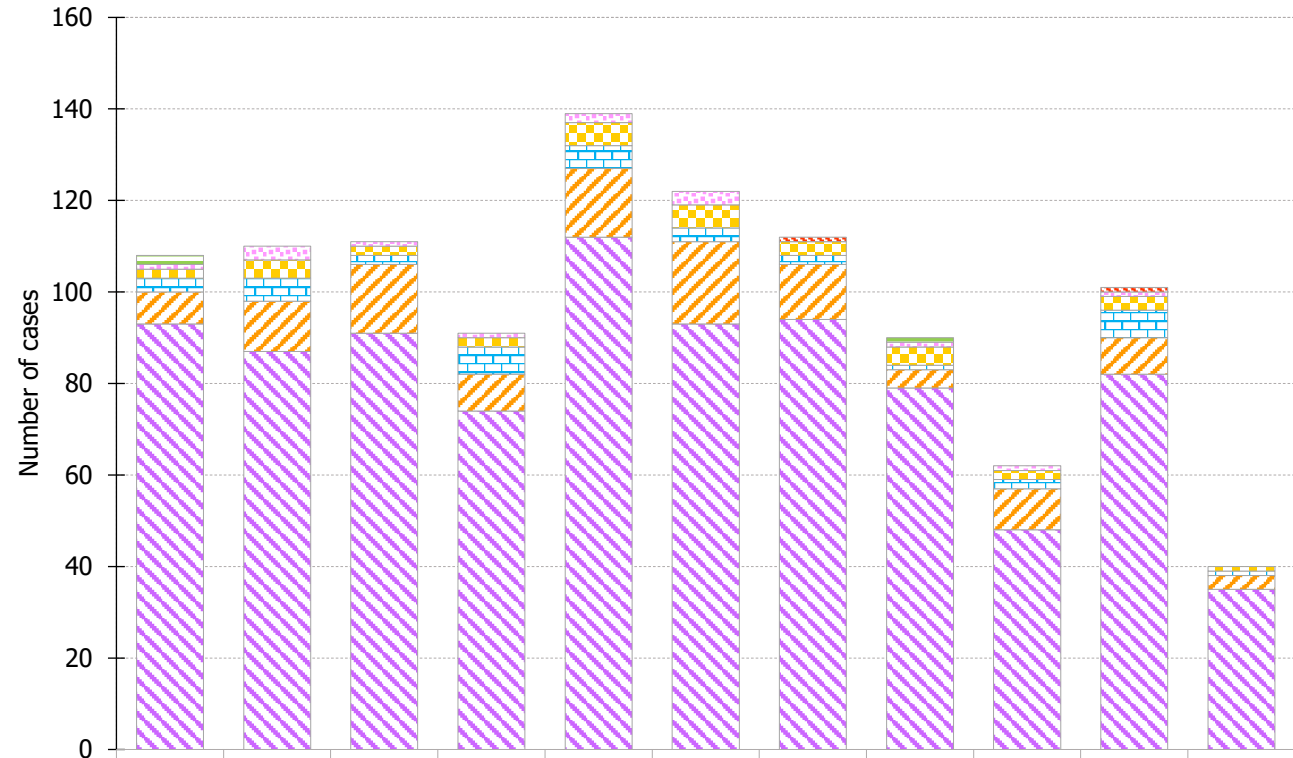
Drug rehabilitation services	10	14	6	3	1	1	2	2	1	1	2
Hong Kong Red Cross Blood Transfusion Service	12	16	7	8	4	1	6	5	4	6	2
AIDS service organisations (NGOs)	122	120	113	91	79	70	54	53	38	46	31
DH AIDS Unit	97	86	62	106	72	60	57	55	53	40	21
Social Hygiene Clinics	103	120	113	114	90	94	69	72	76	43	24
Private hospitals / clinics / laboratories	105	113	122	98	98	93	56	62	56	61	20
Public hospitals / clinics / laboratories	202	256	269	261	280	246	261	198	181	200	85

Year

Table 8.2 Source of referral of reported AIDS

	This quarter (Apr - Jun 2024)	Last quarter (Jan - Mar 2024)	Same quarter last year (Apr - Jun 2023)	Cumulative (1984 – Jun 2024)
Public hospitals / clinics / laboratories	15	20	19	1,961
Private hospitals / clinics / laboratories	1	2	2	311
Social Hygiene Clinics	0	1	1	88
DH AIDS Unit	0	1	0	124
AIDS service organisations (NGOs)	0	0	1	21
Hong Kong Red Cross Blood Transfusion Service	0	0	1	11
Drug rehabilitation services	0	0	0	7
Total	16	24	24	2,523

Chart 8.2 Source of referral of Reported AIDS



	2014	2015	2016	2017	2018	2019	2020	2021	2022	2023	2024 (1-6)
Drug rehabilitation services	2	0	0	0	0	0	0	1	0	0	0
Hong Kong Red Cross Blood Transfusion Service	0	0	0	0	0	0	1	0	0	1	0
AIDS service organisations (NGOs)	1	3	1	1	2	3	0	1	1	1	0
DH AIDS Unit	2	4	2	2	5	5	3	4	2	3	1
Social Hygiene Clinics	3	5	2	6	5	3	2	1	2	6	1
Private hospitals / clinics / laboratories	7	11	15	8	15	18	12	4	9	8	3
Public hospitals / clinics / laboratories	93	87	91	74	112	93	94	79	48	82	35

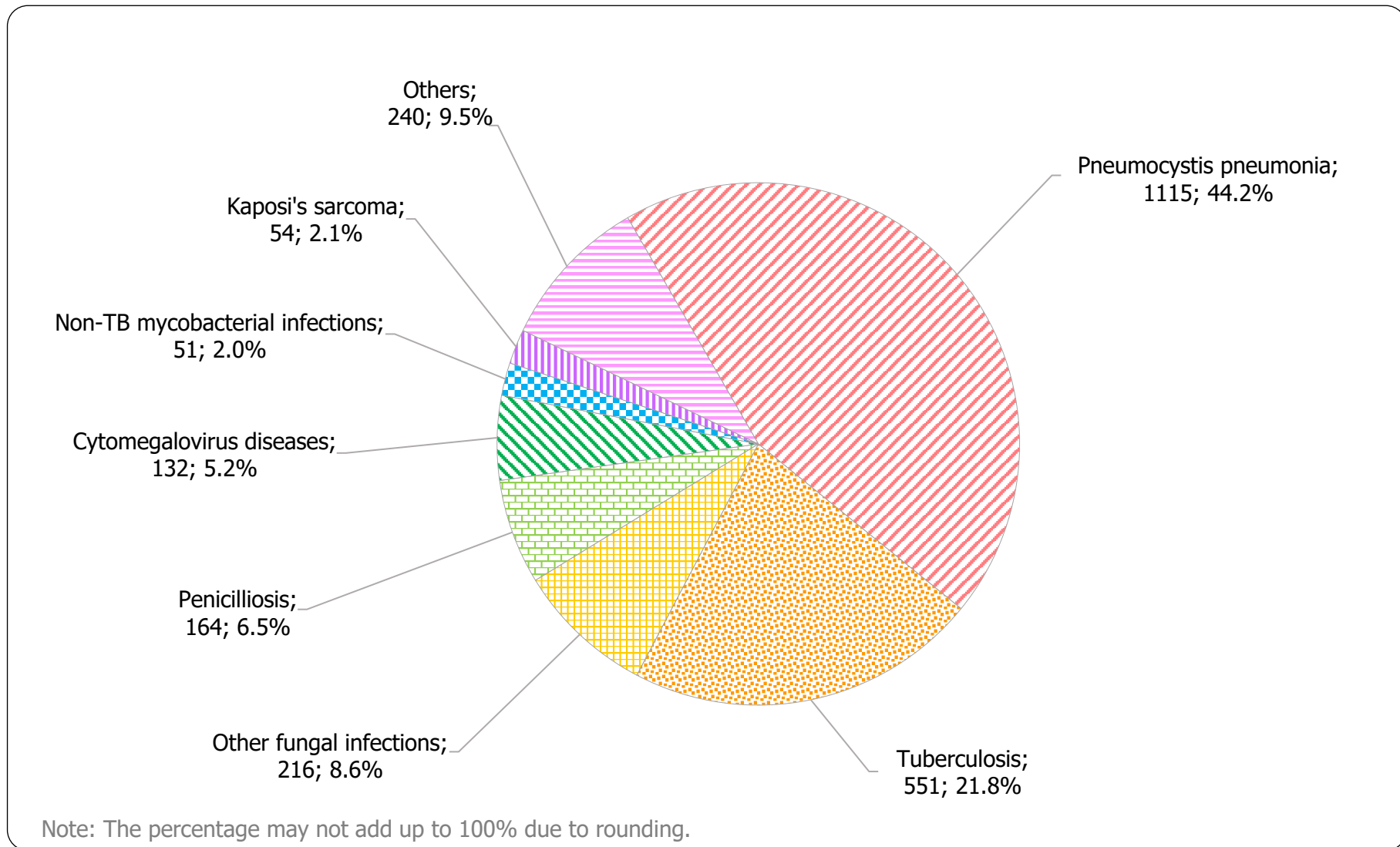
Year

9. Distribution of AIDS defining illnesses

Table 9.1 Distribution of AIDS defining illness of reported AIDS

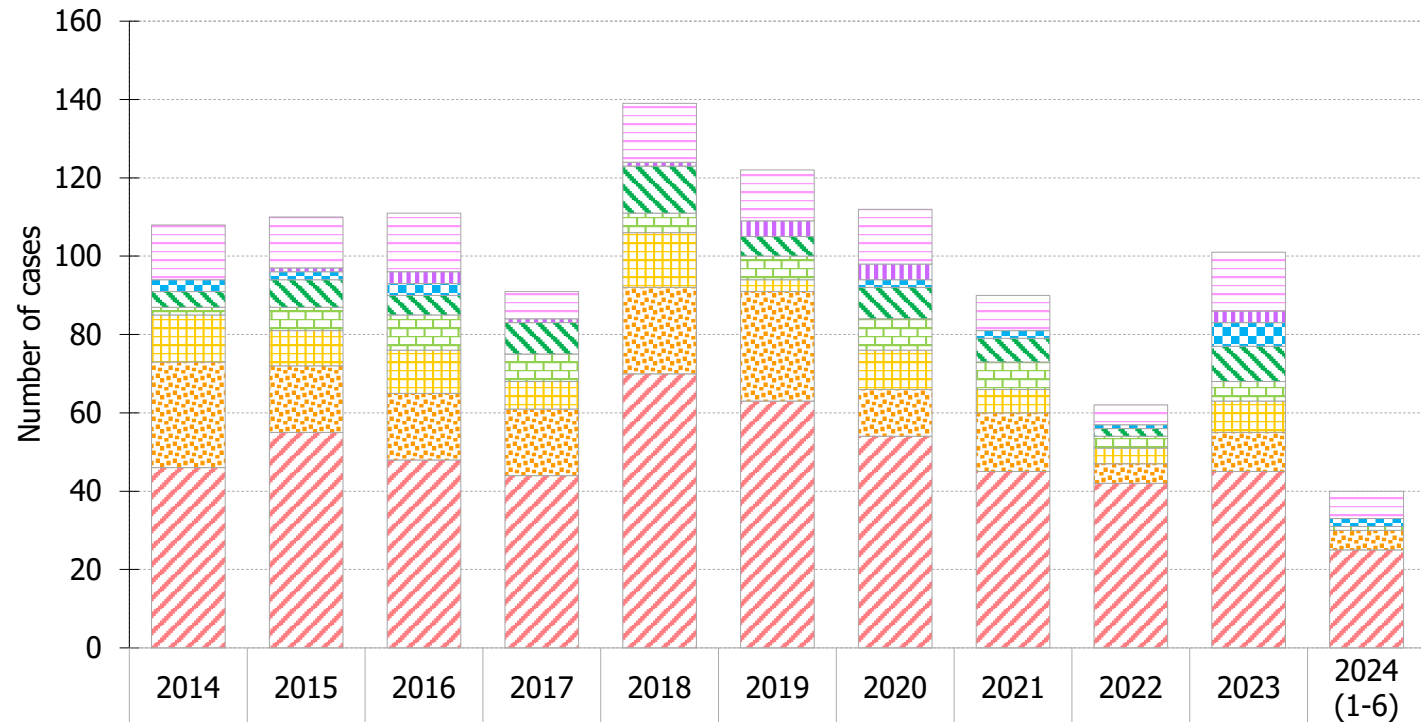
	This quarter (Apr - Jun 2024)	Last quarter (Jan - Mar 2024)	Same quarter last year (Apr - Jun 2023)	Cumulative (1984 – Jun 2024)
<i>Pneumocystis pneumonia</i>	9	16	8	1,115
<i>Tuberculosis</i>	4	1	4	551
Other fungal infections	0	0	3	216
Penicilliosis	1	0	3	164
Cytomegalovirus diseases	0	0	0	132
Non-TB mycobacterial infections	1	1	1	51
Kaposi's sarcoma	0	0	0	54
Others	1	6	5	240
Total	16	24	24	2,523

Chart 9.1 AIDS defining illness of total reported AIDS



Format: [ADI; Number; %]

Chart 9.2 AIDS defining illness of reported AIDS by year



	2014	2015	2016	2017	2018	2019	2020	2021	2022	2023	2024 (1-6)
Others	14	13	15	7	15	13	14	9	5	15	7
Kaposi's sarcoma	0	1	3	1	1	4	4	0	0	3	0
Non-TB mycobacterial infections	3	2	3	0	0	0	2	2	1	6	2
Cytomegalovirus diseases	4	7	5	8	12	5	8	6	2	9	0
Penicilliosis	2	6	9	7	5	6	8	7	3	5	1
Other fungal infections	12	9	11	7	14	3	10	6	4	8	0
Tuberculosis	27	17	17	17	22	28	12	15	5	10	5
Pneumocystis pneumonia	46	55	48	44	70	63	54	45	42	45	25

Year

10. Reported sexually transmitted infections (STIs) diagnosed in Social Hygiene Service

Table 10.1 Summary table on the reported STIs diagnosed in Social Hygiene Service

	This quarter (Apr - Jun 2024)	Last quarter (Jan - Mar 2024)	Same quarter last year (Apr - Jun 2023)	In year 2023
Syphilis				
<i>Primary</i>	18	26	16	75
<i>Secondary</i>	25	36	52	230
<i>Early latent</i>	33	38	56	207
<i>Late latent</i>	115	107	123	486
<i>Late (cardiovascular / neuro / ocular)</i>	3	2	2	12
<i>Congenital (early)</i>	0	0	0	0
<i>Congenital (late)</i>	0	0	0	0
<i>Others *</i>	8	8	2	18
Syphilis total	202	217	251	1,028

(to be cont'd)

Table 10.1 (cont'd)

	This quarter (Apr - Jun 2024)	Last quarter (Jan - Mar 2024)	Same quarter last year (Apr - Jun 2023)	In year 2023
Gonorrhoea	436	461	378	1,575
Non-gonococcal urethritis (Male)	314	344	291	1,159
Non-specific genital infection (Female)	269	263	257	1,199
Chlamydia trachomatis *	566	498	415	1,804
Genital wart	315	271	250	1,104
Herpes genitalis	130	142	100	464
Pediculosis pubis	88	86	37	179
Trichomonas	28	26	37	180
Genital ulcer	112	121	24	249
Mycoplasma genitalium *	39	32	11	67
Chancroid / Lymphogranuloma venereum	1	0	1	2
Others	89	89	50	264
Total	2,589	2,550	2,102	9,274

* Added as a new category since 2022 Q3

11. Gender distribution of reported STIs

Table 11.1 Gender distribution of selected STI reported by Social Hygiene Service

	This quarter (Apr - Jun 2024)	Last quarter (Jan - Mar 2024)	Same quarter last year (Apr - Jun 2023)	In year 2023
Primary Syphilis				
Male (M)	18	26	16	75
Female (F)	0	0	0	0
M : F	N.A.	N.A.	N.A.	N.A.
Gonorrhoea				
Male (M)	378	408	343	1,393
Female (F)	58	53	35	182
M : F	6.5 : 1	7.7 : 1	9.8 : 1	7.7 : 1
NGU / NSGI *				
Male (M)	314	344	291	1,159
Female (F)	269	263	257	1,199
M : F	1.2 : 1	1.3 : 1	1.1 : 1	1.0 : 1

(to be cont'd)

Table 11.1 (cont'd)

	This quarter (Apr - Jun 2024)	Last quarter (Jan - Mar 2024)	Same quarter last year (Apr - Jun 2023)	In year 2023
CT *				
Male (M)	387	333	298	1,285
Female (F)	179	165	117	519
M : F	2.2 : 1	2.0 : 1	2.5 : 1	2.5 : 1
Genital wart				
Male (M)	242	215	193	867
Female (F)	73	56	57	237
M : F	3.3 : 1	3.8 : 1	3.4 : 1	3.7 : 1
Herpes genitalis				
Male (M)	83	91	77	316
Female (F)	47	51	23	148
M : F	1.8 : 1	1.8 : 1	3.3 : 1	2.1 : 1

* NGU = Non-gonococcal urethritis

NSGI = Non-specific genital infection

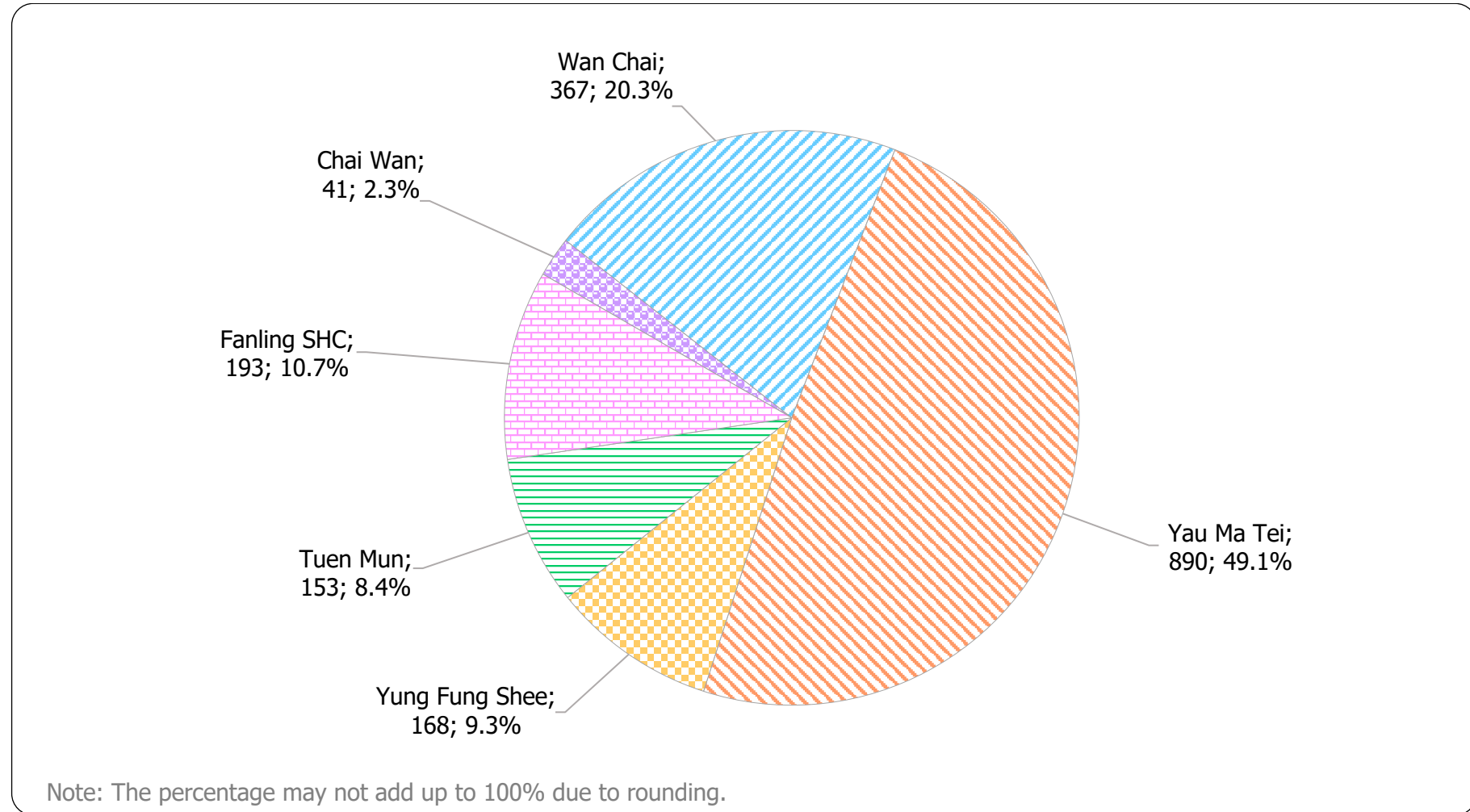
CT = Chlamydia trachomatis

Table 11.2 Gender distribution of reported STI by clinic

	This quarter (Apr - Jun 2024)		Last quarter (Jan - Mar 2024)		Same quarter last year (Apr - Jun 2023)		In year 2023	
	Male	Female	Male	Female	Male	Female	Male	Female
Chai Wan	41	13	42	6	0	0	47	13
Wan Chai	367	179	378	147	302	198	1,290	856
Yau Ma Tei	890	384	929	365	789	200	3,344	1,015
Yung Fung Shee	168	62	163	62	134	80	662	333
Tuen Mun	153	66	122	90	127	58	493	307
Fanling SHC	193	73	175	71	144	70	599	315
Total	1,812	777	1,809	741	1,496	606	6,435	2,839

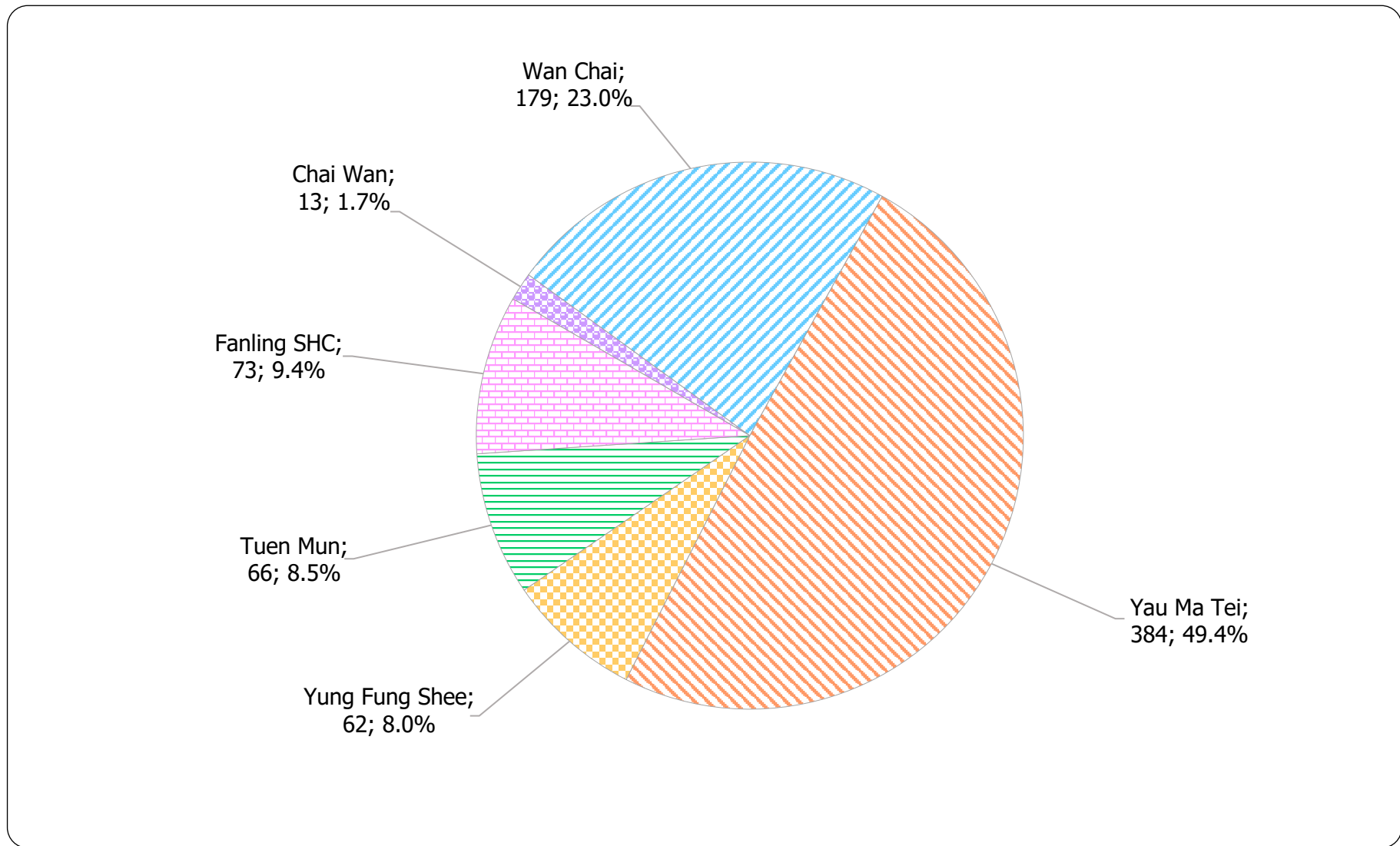
12. Clinic distribution

Chart 12.1 Number of newly report STI in Q2 2024 by clinic (male clients)



Format: [Clinic; Number; %]

Chart 12.2 Number of newly report STI in Q2 2024 by clinic (female clients)



Format: [Clinic; Number; %]